

Mental Health Capital Works Program (MHCWP)

Project Manager's Monthly Progress Report – January 2012 as @ 17 February 2012 with forecast expenditure

PN	Projects
51410	Bayside - New 20 Bed CCU
51411	Logan - New 25 Acute Care Beds
51412	Logan - New 16 Bed CCU
51413	Mackay - New 24 Bed Acute Care Unit
51414	PAH/Mater - New 20 Bed CCU
51415	Redcliffe/Caboolture - 20 Bed Acute Care
51416	Redcliffe/Caboolture - New 23 Bed MSU on Caboolture Hospital Campus
51417	Rockhampton - 4 Psycho-Geriatric ET Beds in new Development
51418	Sunshine Coast - 5 Psycho-Geriatric ET Beds in Nambour RACF
51419	Toowoomba - 8 Bed Child & Youth Unit & Day Centre
51420	Townsville - Redevelop 8 Extended Treatment Beds Kirwan
51421	Townsville - Redevelop 30 Secure Bed Unit TTH
51422	Townsville - New 6 Bed C&Y Unit & Day Centre
51423	West Moreton - New 18 Bed CCU - Goodna (project aborted on this site)
67499	West Moreton - New 18 Bed CCU - Gales
51424	West Moreton - New 9 Bed HS incorp. 5 Bed HDU
51425	West Moreton - Upgrade CCU to 20 Bed Forensic ETU
51426	Redland - New 15 Bed Adolescent ETU, Day Centre & School
50291	Master Programming/Planning/Reserve



This Progress Report was developed by:
Dr Terry Carter
TC Project Management Consultants
2 Red Oak Drive
Tallai
Q 4213



For Health Planning & Infrastructure Division, Queensland Health (HPID). **It may not be copied without prior consent of the author.**

Contents

- 1 Summary Progress Report
- 2 Construction Progress
- 3 MHCWP Program Budget Summary
- 4 Building Works Contract Variation Report
- 5 MHCWP Expenditure Summary
- 6 MHCWP Forecast Expenditure
- 7 MHCWP Master Programme
- 8 Procurement and Risk Management

1 Summary Progress Report

QUEENSLAND HEALTH - CAPITAL DELIVERY PROGRAM - SOUTH

MENTAL HEALTH CAPITAL WORKS PROGRAM - SUMMARY PROGRESS REPORT



District	Project Services P/N	PROJECT NAME	Current Stage	Progress as @ 13-Feb-12	Comments
Brisbane Metro South	51410	Bayside - New 20 Bed CCU	Land Acquisition (LA)	Completed	New Greenfield site, 29 Boundary St Redland purchased site, settled on 9 Oct 2009.
			Model of Service Delivery (MOSD)	Progressing	Design Considerations & MOSD completed. Revised format MOSD being progressed.
			Town Planning/Rezoning (TP)	Completed	
			Pre-Design Incl. PDP (PD)	Completed	
			PDP Approval	Completed	
			Schematic Design (SD)	Completed	
			Schematic Design Approval	Completed	
			Design Development (DD)	Completed	
			Design Development Approval	Completed	
			Contract Documentation incl. Bills (CD)	Completed	Contract documentation progressing, almost complete.
			Contract Documentation Approval	Completed	
			Tender (TE)	Completed	Tender Call 27 July 2011, Tender Closed 31 Aug 2011.
			Tender Evaluation and Award	Completed	Tender awarded 7 Nov 2011.
			Construction (CN)	Progressing	Bored piers completed to bld 2 & 6; Bored piers drilled for bld 1. Footings commenced. Civil retaining wall at back of the site completed; Storm trap installed and backfilled. Geothermal piling complete to bld 1; Civil drainage complete.
Budget	No change				
Fee Approvals Outstanding	Urgent	Approval of \$41,030 QFRS fees pending since 7 Sept 2011.			
Brisbane Metro South	51411	Logan - Redevelop 25 Acute Care Beds	Service Planning (SP)	Completed	
			Town Planning/Rezoning (TP)	Completed	Advice received indicating site designation or material change of use now not required.
			Site(s) Site Option Study (SO)	Completed	
			Pre-Design Incl. PDP (PD)	Completed	
			PDP Approval	Completed	
			Schematic Design (SD)	Completed	
			Schematic Design Approval	Completed	
			Design Development (DD)	Completed	
Design Development Approval	Completed				

QUEENSLAND HEALTH - CAPITAL DELIVERY PROGRAM - SOUTH

MENTAL HEALTH CAPITAL WORKS PROGRAM - SUMMARY PROGRESS REPORT



District	Project Services P/N	PROJECT NAME	Current Stage	Progress as @ 13-Feb-12	Comments
			Contract Documentation incl. Bills (CD)	Completed	
			Contract Documentation Approval	Completed	Approval to go to tender received from HPID on 20 May 2010.
			Tender (TE)	Completed	Tender called 9 June 2010, closed 16 July 2010.
			Tender Evaluation and Award	Completed	Tender Recommendation to HPID 24 August 2010. Tender awarded 20 Sept 2010
			Construction (CN)	Progressing	Construction progressing on different fronts, refer Section Construction Progress photos.
			Budget	No change	
Brisbane Metro South	51412	Logan - New 16 Bed CCU	Model of Service Delivery (MOSD)	Progressing	Design Considerations & MOSD completed.
			Land Acquisition (LA)	Completed	Minister for Housing approved sale of 10 & 12 Wadley St, Logan Central to QH to allow amalgamation into existing site. Valuation currently being sought by CWAMB. Wadley St land settled on 21 April 2010
				Completed	\$300K Gap fund from Emergent works secured. Office accommodation leased signed for decanting existing services.
			Town Planning/Rezoning (TP)	Completed	SPA 9.5 received from DOCs 19 Oct 2011, issue now resolved.
			Pre-Design Incl. PDP (PD)	Completed	Completed
			PDP Approval	Completed	Completed
			Schematic Design (SD)	Completed	Alternative Site Layout completed and reviewed by DOCs.
			Schematic Design Approval	Completed	Completed
			Design Development (DD)	Completed	Completed
			Design Development Approval	Completed	Completed
			Contract Documentation incl. Bills (CD)	Re-commenced	Design-team re-mobilised 24 Oct 2011.
			Budget	Revised	Pre-Tender Estimate as @ 10 Feb 2012 is \$9,930,391 with HPID adjustments on land etc is \$8,628,391. No change to current approved budget of \$9,025,000 until after tenders close.
			Fee Approvals Outstanding	Resolved	Approval of \$502,612 Design Fees pending since 29 Sept 2011. Reduced Fee accepted by Project Services despite abortive work on the revised Scheme having been carried as requested by QH; Ltr received from HPID 21 Dec 2011.
			Tender (TE)	Progressing	Tender due to be called Friday, 17 February 2012 subject to approval ltr to proceed to tender from HPID being received. Tender due to close 16 March 2012.
Brisbane Metro South	51414	PAH - New 20 Bed CCU	Model of Service Delivery (MOSD)	Progressing	Design Considerations & MOSD completed.
			Land Acquisition (LA)	Completed	Contract signed on 160 -166 Old Cleveland Road (\$3.601M excl GST), settlement 24 Apr 08. Note proposed QT tunnel to run along Old Cleveland Road, currently not funded. Discussions held with QT to confirm likely impact if it proceeds. Issue with BCC recent Road widening resolved. S5.6 completed.
			Pre-Design Incl. PDP (PD)	Completed	PDP completed 25 July 2008.
			Schematic Design (SD)	Completed	PDP completed 25 July 2008.
			PDP Approval	Completed	Completed.
			Design Development (DD)	Completed	Completed.
			Design Development Approval	Completed	Completed.
			Contract Documentation incl. Bills (CD)	Completed	Completed.
			Tender (TE)	Completed	Tenders called on 8 July 2009 due to close on 5 Aug 2009. Tender awarded 2 Feb 2010.

QUEENSLAND HEALTH - CAPITAL DELIVERY PROGRAM - SOUTH

MENTAL HEALTH CAPITAL WORKS PROGRAM - SUMMARY PROGRESS REPORT



District	Project Services P/N	PROJECT NAME	Current Stage	Progress as @ 13-Feb-12	Comments
			Construction (CN)	Completed	Practical completion achieved 8 Aug 2011. Outstanding defects being rectified.
			Commissioning (PC)	Completed	First residents admitted 16 September 2011.
			Budget	No change	No change during reporting period.
Brisbane Metro South	51426	Redland - New 15 Bed Adolescent ETU, Day Centre & School	Site(s) Option Study (SO)	Completed	Weippin Site confirmed as the preferred location. On-going consultation process progressing.
			Land Acquisition (LA)	Completed	Purchase of land adjoining Redland Mater Private Hospital complete. Ministerial approval and GIC F/A received. Land settled 11 March 2009.
			Service Planning (SP)	Progressing	Presentation held on 15th Feb 08. C&Y Advisory Group meet on 18 March 2008 to review/endorse. 26 Nov 2008 C&Y Designs Considerations W/S held, MOSD recurrent reviewed. Presentation on by Trevor Sadler on 17 Sept 2009.
			Master Plan (MP)	Initial enquiries progressing	Site survey received, mini master planning commenced. Generic facility layout for 51426 based on draft Schedule of Areas and MOSD to be reviewed during UGM process.
			Pre-Design Incl. PDP (PD)	Completed	UGMs completed. Peer Review held on 4 Feb 2011. PDP complete.
			PDP Approval	On-Hold	Project "On-Hold" 7 June 2011 pending outcome of CID, budget and environmental issues.
			Schematic Design (SD)	Progressing	UGMs completed. Peer Review held on 4 Feb 2011. PDP complete. Brief changed to reflect total of 15 Beds only. First revised Site Plan rejected by DERM, 2 storey option being progressed.
			Schematic Design Approval	On-Hold	Project "On-Hold" 7 June 2011 pending outcome of CID and budget issues.
			Town Planning/Rezoning/CID (TP)	Progressing	Design and town planning docs. required to support CID progressing; Draft Initial Assessment Report F'Cast completion is 16 March 2012 then to go to DERM.
			Budget	No change	PDP/SD Project Estimate complete at \$18,891,443 (excl. GST & land). Brief & Scope reduces scheme costed with \$1.2M possible savings. Changes to 2 storey scheme to save \$ and site footprint area. Limited UGM involvement in this process.
Darling Downs	51419	Toowoomba - 8 Bed Child & Youth Unit & Day Centre	Service Planning (SP)	Initial enquiries progressing	Oct 07 - District to appoint a Project Officer to progress the C&Y Service Plan, to prepare a submission for funding for consideration. SP was due to be completed by June 2008. MOSD received during Sept 2008.
			Site(s) Site Option Study (SO)	Completed	Site Option Study completed.
			Pre-Design Incl. PDP (PD)	Completed	
			PDP Approval	Completed	
			Schematic Design (SD)	Completed	
			Schematic Design Approval	Completed	
			Design Development (DD)	Completed	
			Design Development Approval	Completed	
			Contract Documentation incl. Bills (CD)	Completed	
			Contract Documentation Approval	Completed	Approval to go to tender sought from HPID on 26 Apr 2010.
			Tender (TE)	Completed	Tenders called on Wed 7 July 2010 & close Friday 13 Aug 2010.
			Tender Evaluation and Award	Progressing	Tenders Reviewed and Tender Recommendation to HPID 7 Sept 2010. Contract awarded 5 Oct 2010.
			Construction (CN)	Completed	Practical completion achieved 14 Aug 2011. Outstanding defects being rectified.
			Budget	No change	

QUEENSLAND HEALTH - CAPITAL DELIVERY PROGRAM - SOUTH

MENTAL HEALTH CAPITAL WORKS PROGRAM - SUMMARY PROGRESS REPORT



District	Project Services P/N	PROJECT NAME	Current Stage	Progress as @ 13-Feb-12	Comments
West Moreton	51423	West Moreton - New 18 Bed CCU	Land Acquisition (LA) Consultation Process Town Planning/Rezoning (TP) Service Planning (SP) Pre-Design Incl. PDP (PD) PDP Approval Schematic Design (SD) Schematic Design Approval Design Development (DD) Design Development Approval Contract Documentation incl. Bills (CD) Budget	Completed Progressing Aborted Initial enquiries progressing Completed Completed Completed Completed Completed Completed Aborted Budget closed-out	26-Oct-07 - Goodna CHC - Contract on Gailles site signed by Vendor, pending Ministerial approval requested by 27-Aug-2010, Gailles site settled 5-Oct-2010. Project aborted on Goodna site. On-going with other Districts and other stakeholders. IPA mini designation of S-5.6 delayed due to consultation process with EQ, Local Member & others. Project aborted on Goodna site. Design Considerations & MOSD completed. PDP completed 21-Nov-2008. Signed Approvals Form complete. SD completed 21-Nov-2008. Signed Approvals Form complete. At 89% complete.
West Moreton	67499	West Moreton - New 18 Bed CCU Gailles	Land Acquisition (LA) Consultation Process Town Planning/Rezoning (TP) Service Planning (SP) Pre-Design Incl. PDP (PD) Schematic Design (SD) Budget	Completed Initial enquiries progressing Progressing Progressing Progressing Progressing No change	Issues arisen with Ipswich City Council resolved. Design docs to support SPA9.5 application being progress, 4 wks, then approx. 12 wks for SPA9.5 approvals process. Design Considerations & MOSD completed for Goodna site. Site survey completed. Additional stormwater management investigation completed. Ipswich CC, accepted connection to stowmwater easement pipe. 2nd UGM held. 3rd due 7 Oct 11. UGM's on hold pending resolution of ICC issues. Design work to support SPA 9.5 being progressing; Dwgs due to be completed 17 Feb 12 & then to Town Planner to lodge SPA9.5. Indicative budget established, \$9,015,534.
West Moreton	51424	West Moreton - New 9 Bed HS & 5 Bed HDU	Pre-Design Incl. PDP (PD) Schematic Design (SD) Master Plan (MP) Design Development (DD) Design Development Approval Contract Documentation incl. Bills (CD) Tender (TE) Construction (CN)	Completed Completed Completed Completed Completed Progressing Completed Completed	Principal Consultant (PSP) engaged 22 Nov 2007. User Group process commenced 17 Dec 07. PDP Scope of works and programme being reviewed to accelerate programme. User Group commenced. Issues include Target Population, future expansion requirements and associated Target Population and PICA v HUDA. ON-HOLD pending outcome of HS Site Master Planning exercise. Resolved 2 April 2008 at FPTM. ON-HOLD pending completion of MOSD due end May 08. Draft MOSD distributed for review. PDP Completed 8 August 2008. Verbal approval given to proceed with DD. Completed 8 August 2008 PSP/PS commenced a HS Site Master Planning exercise following advice from MHZ that 15 additional beds are included on Stage 2 of the MHCWP, this will ensure that all 24 beds (9+15) will fit. FWS held on 18th Dec 08 to review DD, Special User Group Mtg arranged for 16 Jan 09 to discuss issues raised. Tender s called 15 July 2009 due to close 13 Aug 2009. Tender review & recommendation completed. Practical completion 27 May 2011.

QUEENSLAND HEALTH - CAPITAL DELIVERY PROGRAM - SOUTH

MENTAL HEALTH CAPITAL WORKS PROGRAM - SUMMARY PROGRESS REPORT



District	Project Services P/N	PROJECT NAME	Current Stage	Progress as @ 13-Feb-12	Comments
			Commissioning (PC)	Progressing	District have possession of the facility for Hospital Commissioning.
			12 Months Defects Liability Period	Progressing	
			Budget	Construction Contingency exceeded	Refer MHCWP Building Contract Variation Register as @ 7 Nov 2011. Funds transfer required within MHCWP overall budget and sought from HPID.
			Fee Approvals Outstanding	Progressing	Approval of increase of \$290,000 (excl GST) contract contingency pending since 16 Sept 2011, figure now \$280,107. Additional supporting information required by HPID.
Darling Downs -	51425	West Moreton - Upgrade CCU to 20 Bed Forensic ETU	Pre-Design Incl. PDP (PD)	Completed	Principal Consultant (PSP) engaged 22 Nov 2007. User Group process commenced 17 Dec 07, now on hold until Service Plan completed and Target Population confirmed.
			Service Planning (SP)	Completed	
			Design Development (DD)	Completed	
			Design Development Approval	Completed	
			Contract Documentation incl. Bills (CD)	Completed	
			Contract Documentation Approval	Completed	Approval to go to tender received from HPID on 11 July 2011.
			Tender (TE)	Completed	Out to tender 14 July 2011. Tender Closed 12 Aug 2011.
			Tender Evaluation and Award	Completed	Tender awarded 23 Jan 2012 to Sommer & Staff.
			Construction (CN)	Progressing	Construction site establishment set-up and dilapidation survey completed
			Budget	No change	
Brisbane Metro North	51415	Redcliffe/Caboolture - 20 Bed Acute Care	Service Planning (SP)	Completed	
			Master Plan (MP)	Completed	
			Pre-Design Incl. PDP (PD)	Completed	
			PDP Approval	Progressing	
			Schematic Design (SD)	Completed	
			Schematic Design Approval	Progressing	
			Design Development (DD)	Completed	Hospital Campus Infrastructure issues resolved.
			Design Development Approval	Progressing	
			Contract Documentation incl. Bills (CD)	Completed	Approval to go to tender received 25 Feb 2010.
			Contract Documentation Approval	Completed	
			Tender (TE)	Completed	Tenders called on 14 Apr 2010 due to close 2 June 2010. Tenders closed 2 June 2010.

QUEENSLAND HEALTH - CAPITAL DELIVERY PROGRAM - SOUTH

MENTAL HEALTH CAPITAL WORKS PROGRAM - SUMMARY PROGRESS REPORT



District	Project Services P/N	PROJECT NAME	Current Stage	Progress as @ 13-Feb-12	Comments
			Tender Evaluation and Award	Completed	Letter of Acceptance issued to Badge Construction (Qld) Pty Ltd 1 Sept 2010.
			Construction (CN)	Progressing	Construction progressing in all wings, behind programme. Refer to site photos contained in 2.0 Construction Progress. F'Cast construction completion date 18 May 2012.
			Budget	Urgent	Construction Contingency exceeded and rising due to unexpected large priced VOs & Claims submitted by the Builder during the reporting period. Refer to MHCWP Building Works Contract Variation Register.
Brisbane Metro North	51416	Redcliffe/Caboolture - New 23 Bed Medium	Service Planning (SP)	Completed	
			Master Plan (MP)	Completed	
			Pre-Design Incl. PDP (PD)	Completed	
			PDP Approval	Completed	
			Schematic Design (SD)	Completed	
			Design Development (DD)	Completed	Hospital Campus Infrastructure issues being progressed by District/HPID.
			Design Development Approval	Progressing	
			Contract Documentation incl. Bills (CD)	Completed	Approval to go to tender received 25 Feb 2010.
			Contract Documentation Approval	Completed	
			Tender (TE)	Completed	Tenders called on 14 Apr 2010 due to close 2 June 2010. Tenders closed 2 June 2010.
			Tender Evaluation and Award	Completed	Letter of Acceptance issued to Badge Construction (Qld) Pty Ltd 1 Sept 2010.
			Construction (CN)	Progressing	Construction progressing in all wings, behind programme. Refer to site photos contained in 2.0 Construction Progress. F'Cast construction completion date 18 May 2012.
			Budget	Urgent	Construction Contingency exceeded and rising due to unexpected large priced VOs & Claims submitted by the Builder during the reporting period. Refer to MHCWP Building Works Contract Variation Register.
Central QLD	51417	Rockhampton - 4 Psycho-geriatric Acute Beds	General Note	Deferred	Not until 2009-2010 to allow completion with Hospital Redevelopment works. Confirmed by DM.
			Budget	No change	F'Cast Completion Mid 2013. No change during reporting period.
Sunshine Coast - Wide Bay	51418	Sunshine Coast - 5 Bed in Nambour RACF	Construction (CN)	Completed	Included in Nambour RACF on Glenbrook Rd site, now 45 beds including 13 PGU beds. Tender awarded 30 Jan 2009. Practical Completion achieved on 8 Dec 2009 on SP1, sewer & stormwater pending. Deed of Settlement executed.
			Commissioning (PC)	Completed	Residents transferred from Hibiscus House 26 Apr 2010.
			Budget	No change	No change during reporting period.
Mackay	51413	Mackay - New 24 Bed Acute Care Unit	Service Planning (SP)	Now Major Projects Unit responsibility	Meeting held with District and Area reps in Mackay on Thursday, 20 Sept 07 to progress the project.
			Model of Service Delivery (MOSD)	Now Major Projects Unit responsibility	Adult Acute Inpatient Workshop held on 11 Feb 2008, generic MOSD & staffing profiles being progressed. Final Workshop scheduled for 22 April 08. Draft MOSD circulated.
			Master Plan (MP)	Now Major Projects Unit responsibility	26 Oct 07 - Master Plan located & confirmed Acute Mental Health beds in Clinical Service Plan. 18 existing; 17 (06/07); 21 (11/12); 26 (16/17).

QUEENSLAND HEALTH - CAPITAL DELIVERY PROGRAM - SOUTH

MENTAL HEALTH CAPITAL WORKS PROGRAM - SUMMARY PROGRESS REPORT



District	Project Services P/N	PROJECT NAME	Current Stage	Progress as @ 13-Feb-12	Comments
			Pre-Design Incl. PDP (PD)	Aborted	Option 3B in Master Plan accommodates Mental Health Beds in stand alone building where current IT building is located, abutting existing mortuary. Project can proceed subject to decanting of IT. Mater Plan being re-addressed. Final location of MHU to be confirmed. F'Cast completion April 2012. Project now amalgamated with total Hospital Redevelopment Project and aborted from this process.
			Budget	Budget closed-out	Project closed-out.
Townsville	51420	Townsville - Redevelop 8 Extended Treatment Beds Kirwan	General Note	District to procure	Fund transfer to THSD when Estimate of Cost agreed. Costs reimbursement approved at \$580,000. Completed.
			Commissioning (PC)	Completed	Project completed.
			Budget	No change	No change to budget during reporting period.
Townsville	51421	Townsville - Redevelop 30 Secure Bed Unit TTH	Service Planning (SP)	Completed	MOSD approved and re-confirmed at FPTM on 10 Dec 2008.
			Site(s) Option Study (SO)	Completed	Three (3) options being considered in Site Option Study. First FPTM held on 22 May 2008. User Group process commenced 5 June 2008. Site Option Report received 15 Aug 08. Project ON-HOLD pending approval of Site Option and MOSD. Presentation of TTH Draft Master Plan held on 8 Oct 2008 at CW&AMB, some issues due to lack of briefing to Aurora, resolving. Site now secure and Workshop held on 14 Nov 08 to discuss.
			Pre-Design Incl. PDP (PD)	Completed	
			Schematic Design (SD)	Completed	
			PDP Approval	Completed	Approved by CEO 22 Sept 2010.
			Schematic Design Approval	Completed	Approved by CEO 22 Sept 2010.
			Design Development (DD)	Completed	UGM re-commenced 8 March 2011. FPTM to be re-established on 25 March 2011. Change in MOSD from hybrid HS-MSU to Secure Mental Health Rehabilitation Unit (SMHRU) with reduced focus on embedded security presence. Quick Security Users Requirements (SUR) audit conducted by People and Culture Strategic Services/Safety and Wellbeing, issues raised to be addressed at UGMs. On-hold pending advice from District due 8 Apr 2011. UGM held 2 June 2011, revised draft floor plan tabled & approved in principal. UGMs progressing. BCA issues identified with existing plant rooms, being evaluated. DD completed 25 Nov 2011.
			Design Development Approval	Progressing	DD documents being reviewed by User Group who are providing feed-back. DD presented to EMT on 7 Dec 2011, design option proposed endorsed. Costs savings to be found to achieve approved budget.
			Budget	Urgent	Approx. \$600,000 to be found in DD budget (\$17,252,000) to match approved budget of \$16,653,236, being investigated.
			Fee Approvals Outstanding	Urgent	Approval of \$141,539 Design Fees pending since 30 June 2011. Woodhead offered a reduction despite having completed the agreed scope of works. Approval ltr pending form HPID.
Townsville	51422	Townsville - New 6 Bed C&Y Unit & Day Centre	Master Plan (MP)	Completed	Need to confirm site location on TTH Campus or other external site. Cambridge St under consideration. Project Officer to be appointed to progress Service Plan. Draft MOSD completed. No provisions made in Aurora Master Plan as @ 8 Oct 08, trying to resolve this by site allocation next to AMHU. Site now resolved.
			Site(s) Site Option Study (SO)	Completed	First FPTM held on 29 Jan 2009. TTH next to AMH confirmed as preferred site.
			Pre-Design Incl. PDP (PD)	Completed	District CEO confirmed Kirwan Site.
			PDP Approval	Completed	30 March 2010. District CEO confirmed Kirwan Site.
			Schematic Design (SD)	Completed	District CEO confirmed Kirwan Site.
			Schematic Design Approval	Completed	30 March 2010. District CEO confirmed Kirwan Site.
			Schematic Design (SD)	Progressing	User Group Mtgs re-commenced on 14 May for revised PDP/SD for the Kirwin Site. Site B confirmed on 23 July 2010.
			Design Development (DD)	Completed	
			Design Development Approval	Completed	
			Contract Documentation incl. Bills (CD)	Completed	
			Contract Documentation Approval	Completed	Pre-Tender to HPID on 10 May 2011 for approval to go to tender. Approval received 7 June 2011.

QUEENSLAND HEALTH - CAPITAL DELIVERY PROGRAM - SOUTH

MENTAL HEALTH CAPITAL WORKS PROGRAM - SUMMARY PROGRESS REPORT



District	Project Services P/N	PROJECT NAME	Current Stage	Progress as @ 13-Feb-12	Comments
			Tender (TE)	Completed	Out to Tender 15 July 2011. Tender Closed 26 July 2011.
			Tender Evaluation and Award	Aborted	Tender 1 review underway, complicated and delayed with ACCC issues of lowest tenderer. Tender Review aborted 18 Oct 2011.
			Tender (TE)	Completed	Re-Tender underway. Out to tender 4 Nov 2011, closed 29 Nov 2011.
			Tender Evaluation and Award	Completed	Re-tender awarded to J M Kelly 1 Feb 2012.
			Construction (CN)	Progressing	Construction underway with site establishment completed.
			Budget	No change	No change to budget during reporting period.
ALL	50291	Master Programming/Planning/Reserve	Budget	Revised	Reserve = \$151,050 surplus

2 Construction Progress

51411 - Logan 25 Bed ACU



51410 Bayside 20 Bed CCU



51415/51416 - Redcliffe Caboolture 20 Bed ACU & 25 Bed MSU



3 MHCWP Program Budget Summary

QUEENSLAND HEALTH – CAPITAL WORKS & ASSET MANAGEMENT BRANCH

MENTAL HEALTH CAPITAL WORKS PROGRAM

BUDGET SUMMARY



District	Project	Original "Very" Indicative Budget \$	Adjustments/ Transfers \$	Current Budget \$	F'Cast Budget (17 Feb 2012) \$	Comments
Brisbane Metro South	Bayside - New 20 Bed CCU	8,085,915	1,369,956	9,455,868	9,455,868	Land included - Bayside
Brisbane Metro South	Logan - Redevelop 25 Acute Care Beds	6,564,970	8,882,848	15,447,817	15,527,817	transfer \$200,000 Chilled Water allowance to Reserve; Add \$280,000 for increase in ICT
Brisbane Metro South	Logan - New 16 Bed CCU	6,691,576	2,333,424	9,025,000	8,628,391	Land included
Mackay	Mackay - New 24 Bed Acure Care Unit	11,480,076	-8,930,076	2,550,000	2,550,000	
Brisbane Metro South	PAH/Mater - New 20 Bed CCU	7,992,674	2,553,859	10,546,533	10,459,971	Land included. Transfer \$86,562 (say) savings to Reserve
Brisbane Metro North	Redcliffe/Caboolture - 20 Bed Acute Care	8,162,984	2,484,743	10,647,727	10,980,891	F'Cast = \$10,647,727+\$333,164
Brisbane Metro North	Redcliffe/Caboolture - New 23 Bed MSU on Caboolture Hospital Campus	12,371,639	-588,011	11,783,629	12,026,767	F'Cast = \$11,783,629+\$243,138
Central Queensland	Rockhampton - 4 Psycho-Geriatric Acute Beds in new Development	548,420	13,580	562,000	562,000	
Sunshine Coast - Wide Bay	Sunshine Coast - 5 Psycho-Geriatric ET Beds in Nambour RACF	991,440	-991,440	0	0	
Darling Downs	Toowoomba - 8 Bed Child & Youth Unit & Day Centre	5,781,733	4,840,167	10,621,902	10,471,902	Transfer say \$150,000 savings to Reserve
Townsville	Townsville - Redevelop 8 Extended Treatment Beds Kirwan	1,200,000	-628,546	571,454	571,454	
Townsville	Townsville - Redevelop 30 Secure Bed Unit TTH	11,833,827	4,819,409	16,653,236	16,653,236	
Townsville	Townsville - New 6 Bed C&Y Unit & Day Centre	5,836,592	6,727,474	12,564,066	12,564,066	
West Moreton	West Moreton - New 18 Bed CCU	7,204,597	-6,341,710	862,887	862,887	Project Aborted on this site 11 Feb 2011
West Moreton	West Moreton - Gales New 18 Bed CCU	0	9,015,534	9,015,534	9,015,534	Above Project transferred to Gales site
West Moreton	West Moreton - New 9 Bed HS incorp. 5 Bed HDU	5,640,373	2,342,466	7,982,839	8,225,722	F'Cast = \$7,982,838+\$242,883 refer CMR at close-out
West Moreton	West Moreton - Upgrade CCU to 20 Bed Forensic ETU	4,587,414	-2,635,390	1,952,005	1,952,005	
Brisbane Metro South	Redland - New 15 Bed Adolsecent ETU, Day Centre & School	10,291,637	4,400,123	14,691,760	17,691,443	Land excl. @ \$2M; F'Cast \$18.9M based on PDP/SD Project Estimate. Less \$1.2M
Master Programming/Planning/Reserve	MHCWP Program Reserve	5,158,144	-1,741,398	3,416,746	151,050	Funding Balance
TOTAL	TOTAL	120,424,011	27,927,012	148,351,003	148,351,003	Capital Works Program

13-Jan-12 Report	Budget Adjustments During Reporting Period
9,455,868	0
15,447,817	0
9,025,000	0
2,550,000	0
10,546,533	0
10,647,727	0
11,783,629	0
562,000	0
0	0
10,621,902	0
571,454	0
16,653,236	0
12,564,065	1
862,887	0
9,015,534	0
7,982,838	1
1,952,005	0
14,691,760	0
3,416,746	0
148,351,001	2

32,338,756	Northern
22,993,356	Central
89,602,145	Southern
3,416,746	Program Reserve
148,351,003	Total Funding as @ 29/03/11
2,000,000	Redland Land
150,351,003	TOTAL

4 Building Works Contract Variation Report

MENTAL HEALTH CAPITAL WORKS PROGRAM – 1.07 CONTRACT CONTINGENCY

BUILDING WORKS CONTRACT VARIATION SCHEDULE

PN	Project	Estimate or Accepted Tender (excl. GST) \$	Original 1.07 Contract Contingency Prior/After Tender Awarded \$	Adjustments to Accepted Tender Variations \$	Current Contingency \$	Contingency Uncommitted as @ 17 Feb 2012 \$	% of contingency remaining %
51410	BAYSIDE 20 BED CCU	5,729,850.00	336,000.00	-4,433.00	336,000.00	340,433.00	101.32%
51411	LOGAN 25 BED ACU	10,634,545.00	1,063,455.00	675,928.81	1,063,455.00	363,526.19	34.18%
51412	LOGAN 16 BED CCU	5,480,500.00	274,000.00	0.00	274,000.00	274,000.00	100.00%
51414	COOPAROO 20 Bed CCU	4,770,000.00	477,000.00	390,438.00	477,000.00	86,562.00	18.15%
51415	REDCLIFFE/CABOOLTURE 20 Bed ACU	7,052,030.00	705,203.00	1,023,966.73	705,203.00	-333,163.73	-47.24%
51416	REDCLIFFE/CABOOLTURE 23 Bed MSU	7,952,290.00	795,229.00	1,023,966.73	795,229.00	-243,137.73	-30.57%
51419	TOOWOOMBA 8 BED ADOLESCENT UNIT	7,800,860.00	780,100.00	617,904.00	780,100.00	162,196.00	20.79%
51421	TOWNSVILLE 30 BED MSU	13,114,896.00	655,745.00	0.00	655,745.00	655,745.00	100.00%
51422	TOWNSVILLE 6 BED CHILD & YOUTH UNIT	8,995,510.00	449,776.00	0.00	449,776.00	449,776.00	100.00%
67499	WEST MORETON 20 BED CCU - GAILES	6,089,523.00	304,477.00	0.00	304,477.00	304,477.00	100.00%
51424	WEST MORETON 9 BED HSU	5,975,588.00	450,000.00	729,242.13	450,000.00	-279,242.13	-62.05%
51425	WEST MORETON 20 BED ETU	1,278,421.00	130,000.00	0.00	130,000.00	130,000.00	100.00%
51426	REDLAND 15 BED ADOLESCENT ETU	9,500,000.00	950,000.00	0.00	950,000.00	950,000.00	100.00%
Grand Totals Projects Under Construction/Defects Liability Period		44,185,313.00	4,270,987.00	4,461,446.40	4,270,987.00	97,173.60	2.28%

MENTAL HEALTH CAPITAL WORKS PROGRAM – 1.07 CONTRACT CONTINGENCY

BUILDING WORKS CONTRACT VARIATION SCHEDULE

PN	Project	Estimate or Accepted Tender (excl. GST) \$	Original 1.07 Contract Contingency Prior/After Tender Awarded \$	Adjustments to Accepted Tender Variations \$	Current Contingency \$	Contingency Uncommitted as @ 17 Feb 2012 \$	% of contingency remaining %	Descriptions	Date VO issued	Variation/Claim Type	Approved by QS/Supr.	Variation/Claim Categories
PROVISIONAL DELAYS COSTS ADJUSTMENT			Total		50,225.00			Adjusted - Refer EOT Schedule - Closed Out	26-Jan-12			
	Original Contract Sum	5,975,588.00										
	Original Contract Contingency	450,000.00										
	Increase 1.07 Contract Contingency				0.00			Additional financial approval for overrun pending from HPID since 16 Sept 2011, \$290K sought				
51424	WEST MORETON 9 BED HSU	5,975,588.00	450,000.00	729,242.13	450,000.00	-279,242.13	-62.05%					
51425	WEST MORETON 20 BED ETU	1,278,421.00	130,000.00	0.00	130,000.00	130,000.00	100.00%					
51426	REDLAND 15 BED ADOLESCENT ETU	9,500,000.00	950,000.00	0.00	950,000.00	950,000.00	100.00%					
Grand Totals Projects Under Construction/Defects Liability Period		44,185,313.00	4,270,987.00	4,461,446.40	4,270,987.00	97,173.60	2.28%					

MENTAL HEALTH CAPITAL WORKS PROGRAM – EXTENSION OF TIME SCHEDULE

PROVISIONAL DELAYS COSTS/TIME ADJUSTMENTS

as @ 17 Feb 2012

PN	Project	EOT #	Claimed Days Wks/Days	Approved Days Wks/Days	Reason for EOT	Adjusted Date for Practical	COST Y/N	Prov. Delay Allowance Cum. Balance \$	Commitment if 100% Approved \$
51410	BAYSIDE 20 BED CCU					28-Sep-12		-\$18,000.00	\$0.00
51411	LOGAN 25 BED ACU					29-May-12		\$0.00	\$24,000.00
51412	LOGAN 16 BED CCU								
51414	COOPAROO 20 Bed CCU					9-Jun-11		-\$500.00	0.00
51415 & 514166	REDCLIFFE/CABOOLTURE 20 Bed ACU & 25 BED MSU					1-Feb-12		-\$36,000.00	\$28,800.00
51419	TOOWOOMBA 8 BED ADOLESCENT UNIT					10-Oct-11		\$3,700.00	
51421	TOWNSVILLE 30 BED MSU								
51422	TOWNSVILLE 6 BED CHILD & YOUTH UNIT					13-Dec-12		-\$30,000.00	
67499	WEST MORETON 20 BED CCU - GAILES								
51424	WEST MORETON 9 BED HSU					30-May-11		\$50,225.00	
51425	WEST MORETON 20 BED ETU					10-Jul-12		-\$5,100.00	
51426	REDLAND 15 BED ADOLESCENT ETU								
TOTALS									

MENTAL HEALTH CAPITAL WORKS PROGRAM – EXTENSION OF TIME SCHEDULE

PROVISIONAL DELAYS COSTS/TIME ADJUSTMENTS

as @ 17 Feb 2012

PN	Project	EOT #	Claimed Days Wks/Days	Approved Days Wks/Days	Reason for EOT	Adjusted Date for Practical	COST Y/N	Prov. Delay Allowance Cum. Balance \$	Commitment if 100% Approved \$
	Accepted Date								
	Completion Time		45 weeks						
	Tender - Principal Caused Delay Cost/Day - \$ (excl. GST)		\$1,000.00						
	# of days Included in Tender		20						
	Tender - Provisional Day Allowance (excl. GST) - \$		\$20,000.00						
		4	4	0	Asbestos Scraping to Building Footprints – withdrawn	16-Sep-12	N	-\$20,000.00	
		2	1	1	Inclement weather on 24 Nov 2011	18-Sep-12	N	-\$20,000.00	
		3	1	1	Inclement weather on 7 Dec 2011	17-Sep-12	N	-\$20,000.00	
		4	5	4	Inclement weather on 8, 9 (3hrs), 12, 15 & 16 Dec 2011	25-Sep-12	N	-\$20,000.00	
		5	3	3	Inclement weather 16/1/12, 17/1/12 & 18/1/12	28-Sep-12	N	-\$20,000.00	
		6	12	2	Bored Pier Re-design	3-Oct-12	Y	-\$18,000.00	
		7	12	11	Inclement Weather	19-Oct-12	N	-\$18,000.00	
51410	BAYSIDE 20 BED CCU					28-Sep-12		-\$18,000.00	\$0.00
	Accepted Date		20-Sep-10						
	Completion Time		60 weeks						
	Tender - Principal Caused Delay Cost/Day - \$ (excl. GST)		\$2,000.00						
	# of days Included in Tender		20						
	Tender - Provisional Day Allowance (excl. GST) - \$		\$40,000.00						
		1	6 wks	6 wks	Delayed Site Possession	23-Dec-11	N	-\$40,000.00	
		-	2 wks	2 wks	X-Mas 2011 Shutdown	9-Jan-12	N	-\$40,000.00	
		2	1	1	Inclement Weather	10-Jan-12	N	-\$40,000.00	
		3	2	2	Inclement Weather	12-Jan-12	N	-\$40,000.00	
		5	5	5	Inclement Weather	19-Jan-12	N	-\$40,000.00	
		6	4	4	Inclement Weather	25-Jan-12	N	-\$40,000.00	
		7	3	3	Inclement Weather	31-Jan-12	N	-\$40,000.00	
		8	13	13	Inclement Weather	20-Feb-12	N	-\$40,000.00	
		4	29	20	Erection of hoarding to existing c/yards	20-Mar-12	Y	\$0.00	
		9	5	0 - rejected	Extend fencing to allow connection to both c/yards	20-Mar-12	N	\$0.00	
		10	14	14	Inclement Weather	13-Apr-12	N	\$0.00	
		11	9	9	Inclement Weather	17-Apr-12	N	\$0.00	
		12	2	2	Inclement Weather	1-May-12	N	\$0.00	
		14	9	9	Inclement Weather	15-May-12	N	\$0.00	
		13	24	rejected 5 Dec 11	Alledged delay in approval of Shop Dwgs		N		
		15	7	7	Inclement Weather	29-May-12	N	\$0.00	
		16	30	der review down to	Roof sheet specification change				\$24,000.00
	NOD 14		not qualified		Changes to door frame, door leaf and hardware configurations				
	NOD 17		not qualified		Latent Condition – Existing chilled water run in roof space of exit/bldg				
	NOD 18		not qualified		Latent Condition – Existing switchboard fouling new structural brace in Plant Room				
	NOD 19		not qualified		Redesign of inadequate valley gutter arrangement in slab 2 area (Grid Z2)				
	NOD 20		refer EOT 15		Inclement Weather				
51411	LOGAN 25 BED ACU					29-May-12		\$0.00	\$24,000.00
51412	LOGAN 16 BED CCU								
51414	COOPAROO 20 Bed CCU					9-Jun-11		-\$500.00	0.00
	Accepted Date		01-Sep-10						
	Completion Time		52 weeks						

Tender - Principal Caused Delay Cost/Day - \$ (excl. GST) **\$1,800.00**
 # of days Included in Tender **20**
 Tender - Provisional Day Allowance (excl. GST) - \$ **\$36,000.00**

1	20	20	Delay in awarding tender	28-Sep-11	N	-\$36,000.00	
2	2	2	Inclement Weather	30-Sep-11	N	-\$36,000.00	
3	1	1	Inclement Weather	3-Oct-11	N	-\$36,000.00	
4	1	1	Inclement Weather	4-Oct-11	N	-\$36,000.00	
5	1	1	Inclement Weather	5-Oct-11	N	-\$36,000.00	
6	2	3	Inclement Weather	10-Oct-11	N	-\$36,000.00	
7	2	2	Inclement Weather	12-Oct-11	N	-\$36,000.00	
8	1	1	Inclement Weather	13-Oct-11	N	-\$36,000.00	
9	2	2	Inclement Weather	17-Oct-11	N	-\$36,000.00	
10	1	1	Inclement Weather	18-Oct-11	N	-\$36,000.00	
11	1	1	Inclement Weather	19-Oct-11	N	-\$36,000.00	
12	1	1	Inclement Weather	20-Oct-11	N	-\$36,000.00	
13	3	3	Inclement Weather	25-Oct-11	N	-\$36,000.00	
14	3	3	Inclement Weather	28-Oct-11	N	-\$36,000.00	
15	1	1	Inclement Weather	1-Nov-11	N	-\$36,000.00	
16	1	1	Road Works Bad Access	9-Nov-11	N	-\$36,000.00	
17	2	2	Inclement Weather	3-Nov-11	N	-\$36,000.00	
18	2	2	Inclement Weather	7-Nov-11	N	-\$36,000.00	
19	2	1	Inclement Weather	8-Nov-11	N	-\$36,000.00	
20	2	2	Inclement Weather	14-Nov-11	N	-\$36,000.00	
21	5	5	Inclement Weather	21-Nov-11	N	-\$36,000.00	
22	1	1	Inclement Weather	22-Nov-11	N	-\$36,000.00	
23	2	3	Inclement Weather	25-Nov-11	N	-\$36,000.00	
24	1	1	Inclement Weather	28-Nov-11	N	-\$36,000.00	
25	1	1	Inclement Weather	29-Nov-11	N	-\$36,000.00	
26	30	33	External Authority Delays	20-Jan-12	N	-\$36,000.00	
27	1	1	Inclement Weather	23-Jan-12	N	-\$36,000.00	
28	1	1	Inclement Weather	24-Jan-12	N	-\$36,000.00	
29	1	1	Inclement Weather	25-Jan-12	N	-\$36,000.00	
30	1	0	Inclement Weather	25-Jan-12	N	-\$36,000.00	
31	1	1	Inclement Weather	27-Jan-12	N	-\$36,000.00	
34	1	1	Inclement Weather	30-Jan-12	N	-\$36,000.00	
33	1	1	Inclement Weather	31-Jan-12	N	-\$36,000.00	
32	54	rejected	Delays associated with the design, approval & installation of the soldier piles to rainvault tanks due to out sequence works				\$97,200.00
35	16	under-review	Delays resulting for additional door protection				\$28,800.00
36	1	1	Inclement Weather	1-Feb-12	N	-\$36,000.00	
37	2	2	Inclement Weather	3-Feb-12	N	-\$36,000.00	
38	8	8	Inclement Weather	16-Feb-12	N	-\$36,000.00	
39	1	1	Inclement Weather	17-Feb-12	N	-\$36,000.00	
40	2	2	Inclement Weather	21-Feb-12	N	-\$36,000.00	
NOD 5	not qualified		Changes in original hardware schedule				
NOD 6	not qualified		Delays associated with doors and hardware to Energex Substation				
NOD 6A (21/12/12)	not qualified		Doors and hardware to Energex Substation				
NOD 7 (21/12/11)	not qualified		Delays due to design errors and omissions, variations, RFI response time, and client changes. Can not complete by 31/01/12				
NOD 8	not qualified		Installation of additional access panels as per RFI 418 (BCA Inspections)				
Number not used	not qualified						
NOD 10	not qualified		Mesh to Gates, fences and openings to Secure Courtyards RFI 288/VO147				
NOD 11	not qualified		Stainless Delay in approving Stainless Steel Shop Dwgs (Servery)				
NOD 12	not qualified		Installation of Fitness Equipment				

51415 & 514166 REDCLIFFE/CABOOLTURE 20 Bed ACU & 25 BED MSU 1-Feb-12 **-\$36,000.00** **\$28,800.00**

Accepted Date **05-Oct-10**
 Completion Time **35 weeks**
 Tender - Principal Caused Delay Cost/Day - \$ (excl. GST) **\$1,850.00**
 # of days Included in Tender **15**
 Tender - Provisional Day Allowance (excl. GST) - \$ **\$27,750.00**

1	5	5	Inclement Weather	16-Jun-11	N	-\$27,750.00
2	3	3	Inclement Weather	21-Jun-11	N	-\$27,750.00
3	4	4	Inclement Weather	26-Jun-11	N	-\$27,750.00
4	12	9	Inclement Weather	11-Jul-11	N	-\$27,750.00
5	7	7	Inclement Weather	20-Jul-11	N	-\$27,750.00
6	3	1	Inclement Weather	21-Jul-11	N	-\$27,750.00
7	4	3.5	Inclement Weather	26-Jul-11	N	-\$27,750.00
8	20	15	Inclement Weather	17-Aug-11	N	-\$27,750.00
9	1	1	Inclement Weather	18-Aug-11	N	-\$27,750.00
10	4	4	Inclement Weather	24-Aug-11	N	-\$27,750.00
11	2.5	1	Inclement Weather	25-Aug-11	N	-\$27,750.00
12	3	2	Inclement Weather	30-Aug-11	N	-\$27,750.00
13	1	1	Inclement Weather	31-Aug-11	N	-\$27,750.00
14	2	2	Inclement Weather	2-Sep-11	N	-\$27,750.00
15	2	2	Inclement Weather	6-Sep-11	N	-\$27,750.00
16	1	1	Inclement Weather	7-Sep-11	N	-\$27,750.00
17	2.5	2.5	Inclement Weather	12-Sep-11	N	-\$27,750.00
18	16	14	Impact of VO 35, 36 & 37	3-Oct-11	Y	-\$1,850.00
19	4	3	Impact of VO 42	6-Oct-11	Y	\$3,700.00
20	2	2	Inclement Weather	10-Oct-11	N	\$3,700.00
21	2	2	Inclement Weather	11-Oct-11	N	\$3,700.00

51419 TOOWOOMBA 8 BED ADOLESCENT UNIT 10-Oct-11 \$3,700.00

51421 TOWNSVILLE 30 BED MSU

Accepted Date
 Completion Time 45 weeks
 Tender - Principal Caused Delay Cost/Day - \$ (excl. GST) \$1,500.00
 # of days Included in Tender 20
 Tender - Provisional Day Allowance (excl. GST) - \$ \$30,000.00

1	1	0	Delay Site Possession	12-Dec-12		
				13-Dec-12	N	-\$30,000.00

51422 TOWNSVILLE 6 BED CHILD & YOUTH UNIT 13-Dec-12 -\$30,000.00

67499 WEST MORETON 20 BED CCU - GAILES

Accepted Date 15-Jul-09
 Completion Time
 Tender - Principal Caused Delay Cost/Day - \$ (excl. GST) \$1,500.00
 # of days Included in Tender 20
 Tender - Provisional Day Allowance (excl. GST) - \$ \$30,000.00

1	8	8	Delay to Commencement	24-Jan-11	N	-\$30,000.00
2	1	1	Inclement Weather	25-Jan-11	N	-\$30,000.00
3	1	1	Inclement Weather	27-Jan-11	N	-\$30,000.00
4	1	1	Inclement Weather	28-Jan-11	N	-\$30,000.00
5	2	2	Inclement Weather	1-Feb-11	N	-\$30,000.00
6&7	3	3	Inclement Weather	4-Feb-11	N	-\$30,000.00
-	0	4	Inclement Weather (SR)	11-Feb-11	N	-\$30,000.00
9	8	8	Groundworks	23-Feb-11	Y	-\$18,000.00
10	1	1	Groundworks (failed geotech)	24-Feb-11	Y	-\$16,500.00
11	1	1	Inclement Weather	25-Feb-11	N	-\$16,500.00
12	1	1	Inclement Weather	28-Feb-11	N	-\$16,500.00
13	3	3	Groundworks - Rock Removal from sewer excavation	3-Mar-11	Y	-\$12,000.00
14	1	1	Inclement Weather	4-Mar-11	N	-\$12,000.00
15	1	1	Inclement Weather	7-Mar-11	N	-\$12,000.00
16	3	3	Inclement Weather	10-Mar-11	N	-\$12,000.00
17	3	0	Alternative Suspended Ceiling	10-Mar-11	N	-\$12,000.00
18 & 19	3	3	Inclement Weather	15-Mar-11	N	-\$12,000.00

	20	1	1	Inclement Weather	16-Mar-11	N	-\$12,000.00	
	21	5	5	Inclement Weather	23-Mar-11	N	-\$12,000.00	
	22	12	9	Vos 68, 69, 71 & 72	6-Apr-11	Y	\$1,500.00	
	23	1	1	Inclement Weather	7-Apr-11	N	\$1,500.00	
	24	1	1	Inclement Weather	8-Apr-11	N	\$1,500.00	
	27	8	3	Various Minor Works	14-Apr-11	Y	\$6,000.00	
	26	1	0	Inclement Weather	14-Apr-11	N	\$6,000.00	
	24 A	2	2	VO 26	18-Apr-11	Y	\$9,000.00	
	25	5	4	Remove of hoarding	27-Apr-11	Y	\$15,000.00	
	28	5	2	Comms Rack	29-Apr-11	Y	\$18,000.00	
	29	9	0	Additional Smoke Test failed	29-Apr-11	N	\$18,000.00	
	30	11	0	VO92 & 93 repairs to existing nurse call & comms rack	29-Apr-11	N	\$18,000.00	
	31	19	19	VO96 & 97 smoke sampling system, repairs to NC etc	30-May-11	Y	\$50,225.00	
51424	WEST MORETON 9 BED HSU						30-May-11	\$50,225.00

Accepted Date
 Completion Time 24 weeks
 Tender - Principal Caused Delay Cost/Day - \$ (excl. GST) \$510.00
 # of days Included in Tender 10
 Tender - Provisional Day Allowance (excl. GST) - \$

	1	2	2	Delayed possession of site 2 to 6 Feb 2012	8-Jul-12 10-Jul-12	N	-\$5,100.00	
51425	WEST MORETON 20 BED ETU						10-Jul-12	-\$5,100.00

51426 REDLAND 15 BED ADOLESCENT ETU

TOTALS

5 MHCWP Expenditure Summary

Fammid ID	Internal Order Description	Actuals 2012 to 31.01.12	January 2012 Actuals
MH_QLDMHPLAN	Queensland Mental Health Plan	\$ 20,196,095.54	\$ 1,645,191.68
MH_BAYSIDE_CC	Bayside Community Care Unit	\$ 387,046.46	\$ 235,703.43
607150	MHCWP-BAYSIDE CCU - ICT	\$ -	\$ -
608006	MHCWP - BAYSIDE CCU - LAND	\$ -	\$ -
608310	MHCWP - BAYSIDE CCU - FF&E	\$ -	\$ -
805546	MHCWP-BAYSIDE CCU	\$ 387,046.46	\$ 235,703.43
MH_LOGAN_ACU	Logan Hospital Acute Care Unit	\$ 3,804,669.62	\$ 677,423.80
608311	MHCWP-LOGAN REDEVELOP ACUTE CARE BED	\$ -	\$ -
608312	MHCWP-LOGAN REDEVELOP ACUTE CARE BED	\$ -	\$ -
805467	MHCWP - Logan Redevelop Acute Care Beds	\$ 3,804,669.62	\$ 677,423.80
MH_LOGAN_CC	Logan Community Care Unit	\$ 200,375.03	\$ 31,726.35
607148	MHCWP-LOGAN CCU-ICT	\$ 193,443.85	\$ 31,726.35
607149	MHCWP-LOGAN CCU - LAND	\$ -	\$ -
607782	MHCWP - LOGAN CCU ACCOM PURCHAS	\$ -	\$ -
608313	MHCWP-LOGAN COMMUNITY CARE UNIT FF&E	\$ -	\$ -
805461	MHCWP - LOGAN CCU	\$ 6,931.18	\$ -
MH_MACKAY_AC	Mackay Hospital Acute Care Unit	\$ 2,200,000.00	\$ -
703844	MACKAY BASE HOSP POP HEALTH UNIT	\$ -	\$ -
805323	MHCWP - MACKAY ACUTE CARE UNIT	\$ -	\$ -
806443	MENTAL HEALTH BEDS MACKAY	\$ 2,200,000.00	\$ -
806679	MACKAY BASE HOSPITAL POPN HLTH UNIT	\$ -	\$ -
MH_PAH_CC	PAH Community Care Unit	\$ 636,281.57	\$ 1,484.00
606968	MHCWP - LAND OLD CLEVELAND ROAD	\$ -	\$ -
607045	MHCWP - LAND OLD CLEVELAND ROAD	\$ -	\$ -
607143	MHCWP-PAH CCU-ICT	\$ 33,909.84	\$ -
608207	MHCWP-PAH CCU - FF&E	\$ 88,987.72	\$ -
703443	MHCWP - LAND OLD CLEVELAND ROAD	\$ -	\$ -
805462	MHCWP - PAH CCU	\$ 513,384.01	\$ 1,484.00
MH_RED-CAB_A	Caboolture Hospital Acute Care Unit	\$ 3,923,115.56	\$ 280,176.14
607144	MHCWP-REDCLIFFE/CABOOLTURE ACU - ICT	\$ -	\$ -
608314	MHCWP-REDCLIFFE/CABOOLTURE ACU - FF&E	\$ -	\$ -
704222	R'DCLIFFE/CABOOLTURE ACU DIST EXP	\$ 322.73	\$ -
805541	MHCWP-R'CLIFFE/CABOOLTURE ACUTE CARE	\$ 3,922,792.83	\$ 280,176.14
806912	R'CLIFFE/CABOOLTURE ACU DIST WKS	\$ -	\$ -

Project Services - January 12 Actuals - Reconciliation	Project Services - Dec Actuals - Reconciliation against Variance 8000 series	Comments
1,604,650.29	-9,476.40	QH HPID expenditure/Discrepancy in 514
235,703.43	0.00	
0	0	
0	0	
0	0	
235,703.43	0.00	
671,689.00	5,734.80	
0	0	
0	0	
671,689.00	5,734.80	QH HPID expenditure
0.00	0.00	
0	0	
0	0	
0	0	
0	0	
0.00	0.00	
0	0	
0	0	
0	0	
0	0.00	
1,484.00	0.00	
0	0	
0	0	
0.00	0.00	
0.00	0.00	
0	0	
0	0	
1,484.00	0.00	
273,312.00	6,864.14	
0	0	
0	0	
0	0	
273,312.00	6,864.14	QH HPID expenditure
0	0	

MH_RED-CAB_M	Caboolture Hospital Medium Secure Unit	\$ 3,960,734.63	\$ 281,635.61
607145	MHCWP-R'CLIFF/CAB MED SECURE UNIT ICT	\$ 20,006.00	\$ 5,780.00
608315	MHCWP-REDCLIFFE/CAB MED SECURE UNIT F	\$ 55,071.56	\$ -
704224	R'CLIFFE/CAB MSU DIST EXP	\$ -	\$ -
805542	MHCWP-R'CLIFFE/CAB MEDIUM SECURE UNIT	\$ 3,885,657.07	\$ 275,855.61
806913	R'CLIFFE/CAB MSU DIST WKS	\$ -	\$ -
MH_ROCKHAMP	Rockhampton Hospital Psycho-Geriatric	\$ -	\$ -
806628	MHCWP-ROCKHAMPTON HOSP PSYCHO-GER	\$ -	\$ -
MH_SUNSHINE_	Nambour Psycho-Geriatric	\$ -	\$ -
607146	MHCWP-SSC NAMBOUR PSYCHO GERIATRIC	\$ -	\$ -
805543	MHCWP-SSC NAMBOUR PSYC GERIATRIC ET	\$ -	\$ -
MH_TOOWOOME	Toowoomba Hospital Child and Youth	\$ 4,345,220.46	\$ 58,452.38
607147	MHCWP-TOOWOOMBA C&Y UNIT & DAY CENT	\$ 45,878.00	\$ 1,966.00
608316	MHCWP-TOOWOOMBA C&Y UNIT & DAY CTE F	\$ 59,567.22	\$ 10,545.44
805544	MHCWP-TOOWOOMBA C&Y UNIT & DAY CENT	\$ 4,239,775.24	\$ 45,940.94
MH_TOWNSVILL	Townsville Extended Treatment Unit	\$ -	\$ -
805444	MHCWP-TOWNSVILLE ETU-BC	\$ -	\$ -
MH_TOWNSVILL	Townsville Secure Unit	\$ 193,909.75	\$ 58,707.36
607151	MHCWP-TOWNSVILLE SECURE BED UNIT - ICT	\$ -	\$ -
608317	MHCWP-TOWNSVILLE SECURE DEB UNIT FF&	\$ -	\$ -
805545	MHCWP-TOWNSVILLE SECURE BED UNIT	\$ 193,909.75	\$ 58,707.36
MH_TOWNSVILL	Townsville Child and Youth	\$ 33,551.15	\$ -
607152	MHCWP-T'VILLE C&Y UNIT & DAY CNTRE ICT	\$ -	\$ -
608318	MHCWP-TOWNSVILLE C&Y UNIT & DAY CTE FF	\$ -	\$ -
805547	MHCWP-TOWNSVILLE C&Y UNIT & DAY CENT	\$ 33,551.15	\$ -
MH_WEST_MOR	Goodna Community Care Unit	\$ -	\$ -
607154	MHCWP-GOODNA CCU LAND	\$ -	\$ -
805324	MHCWP - GOODNA CCU	\$ -	\$ -
MH_WEST MORT	Gailes Community Care Unit	\$ 46,810.29	\$ -
607153	MHCWP-GAILES CCU - ICT	\$ -	\$ -
608200	MHCWP - GAILES CCU LAND 54 OLD LOGAN R	\$ -	\$ -
608319	MHCWP_GAILES CCU - FF&E	\$ -	\$ -
806654	MHCWP - GAILES CCU	\$ 46,810.29	\$ -
MH_WEST_MOR	West Moreton High Secure Unit	\$ 269,677.69	\$ 3,713.00
607155	MHCWP-WEST MORETON HS/HDU - ICT	\$ 4,142.00	\$ -
608340	MHCWP-WEST MORETON HS/HDU - FF&E	\$ 507.69	\$ -
703502	MHCWP - WEST MORETON HS/HDU	\$ -	\$ -
805322	MHCWP - WEST MORETON HS/HDU	\$ 265,028.00	\$ 3,713.00
MH_WEST_MOR	West Moreton Forensic ETU	\$ 54,806.28	\$ 9,032.86

273,378.00	2,477.61	
0.00	0.00	
0.00	0.00	
0	0	
273,378.00	2,477.61	QH HPID expenditure
0	0	
0	0	
0	0	
0	0	
0	0	
78,014.00	-32,073.06	
0.00	0.00	
0	0	
78,014.00	-32,073.06	QH HPID expenditure/Discrepancy
0	0	
0	0	
58,324.00	383.36	
0	0	
0	0	
58,324.00	383.36	QH HPID expenditure
0.00	0.00	
0	0	
0	0	
0	0	
0.00	0.00	
0	0	
0	0	
0	0	
0.00	0.00	
0	0	
0	0	
0	0	
0.00	0.00	
3,713.00	0.00	
0	0	
0	0	
0	0	
3,713.00	0.00	
9,032.86	0.00	

608341	MHCWP-WEST MORETON FORENSIC ETU - FF	\$ -	\$ -
608342	MHCWP-WEST MORETON FORENSIC ETU - IC	\$ -	\$ -
805325	MHCWP - WEST MORETON FORENSIC ETU	\$ 54,806.28	\$ 9,032.86
MH_WEST_MOR	West Moreton Barrett Adolescent Unit	\$ 47,464.16	\$ 4,102.65
607156	MHCWP-WEST MORETON ADOLES ETU DC&S	\$ -	\$ -
607640	MHCWP-WEST MORETON BARRETT ADOLES	\$ -	\$ -
608343	MHCWP-WEST MORETON ADOLES ETU DC&S	\$ -	\$ -
805341	MHCWP - WEST MORETON ADOLES ETU DAY	\$ 47,464.16	\$ 4,102.65
MH_WPROGRAM	Mental Health Program Management	\$ 92,432.89	\$ 3,034.10
703146	MH CAPITAL WORKS PROGRAM MANAGEMEN	\$ 92,432.89	\$ 3,034.10

0	0	
0	0	
9,032.86	0.00	
0.00	4,102.65	
0	0	
0	0	
0	0	
0.00	4,102.65	QH HPID expenditure
0.00	3,034.10	
0.00	3,034.10	QH HPID expenditure

6 MHCWP Forecast Expenditure

PN	PROJECT TITLE - MHCWP	F'CAST BUDGET	ATD		ATD		F'CAST	
		AS @	TOTAL 2007-2008	TOTAL 2008-2009	TOTAL 2009-2010	TOTAL 2010-2011	TOTAL 2011-2012	TOTAL 2012-2013
		17-Feb-12						
51410	BAYSIDE - New 20 Bed CCU	9,455,868	0	63,768	1,777,221	458,795	2,087,046	5,069,038
51411	LOGAN - New 25 Acute Care Beds	15,527,817	1,000	211,338	1,358,765	3,150,164	7,904,670	2,901,881
51412	LOGAN - New 16 Bed CCU	8,628,391	14,750	136,134	801,730	89,390	675,375	6,911,012
51413	MACKAY - New 24 Bed Acute Care Unit	2,550,000	44,584	2,559	0	296,053	2,202,857	3,947
51414	PAH/MATER - New 20 Bed CCU	10,459,971	3,683,432	626,546	692,796	4,484,544	972,654	0
51415	REDCLIFFE/CABOOLTURE - New 20	10,980,891	0	543,661	410,856	3,537,898	6,248,116	240,360
51416	REDCLIFFE/CABOOLTURE - New 23	12,026,763	0	561,838	387,399	3,623,656	6,865,735	588,135
51417	ROCKHAMPTON - 4 Psycho-geriatric Acute Beds	562,000	0	0	0	0	0	0
51418	SUNSHINE COAST - 5 PG ET Beds	0	0	0	0	0	0	0
51419	TOOWOOMBA - 8 Bed C&Youth Unit & Day Centre	10,471,902	0	69,790	734,933	4,781,366	4,795,220	90,593
51420	TOWNSVILLE - Redevelop 8 E/Treatment Beds Kirwan	571,454	571,454	1,000	0	0	0	-1,000
51421	TOWNSVILLE - Redevelop 30 Bed	16,653,236	0	425,399	14,781	74,508	298,910	8,841,293
51422	TOWNSVILLE - New 6 Bed C&Y Unit & Day Centre	12,564,066	0	155,739	221,117	877,027	828,551	10,435,001
51423	WEST MORETON - New 18 Bed CCU	862,887	28,832	382,981	447,074	4,000	0	0
67499	WEST MORETON - New 18 Bed CCU - Gailies	9,015,534				857,573	236,810	3,410,000
51424	WEST MORETON - New 9 Bed HS incorp. 5 Bed HDU	8,225,772	96,488	656,236	1,558,502	5,480,046	344,678	89,823
51425	WEST MORETON - Upgrade CCU to 20 Bed Forensic	1,952,005	2,000	14,400	18,600	161,103	1,454,806	301,096
51426	WEST MORETON - New 15 Bed Adol ETU DayC & School	15,691,443	16,500	8,000	101,118	304,201	127,464	3,655,000
50291	QH - MHCWP Program Planning & Contingency	151,050	50,059	23,936	24,053	22,074	86,327	0
		146,351,050	4,509,099	3,883,325	8,548,944	28,202,398	35,129,218	42,536,179
	Yearly Totals		4,509,099	3,883,325	8,548,944	28,202,398	35,129,218	42,536,179
	Cumulative Totals			8,392,424	16,941,368	45,143,766	80,272,984	122,809,163
	Deduct Land 51426 for 50291 balance	2,000,000						

PN	PROJECT TITLE - MHCWP	F'CAST BUDGET	F'CAST	CHECK
		AS @	TOTAL 2013-2014	
51410	BAYSIDE - New 20 Bed CCU	9,455,868	0	9,455,868
51411	LOGAN - New 25 Acute Care Beds	15,527,817	0	15,527,817
51412	LOGAN - New 16 Bed CCU	8,628,391	0	8,628,391
51413	MACKAY - New 24 Bed Acute Care Unit	2,550,000	0	2,550,000
51414	PAH/MATER - New 20 Bed CCU	10,459,971	0	10,459,971
51415	REDCLIFFE/CABOOLTURE - New 20	10,980,891	0	10,980,891
51416	REDCLIFFE/CABOOLTURE - New 23	12,026,763	0	12,026,763
51417	ROCKHAMPTON - 4 Psycho-geriatric Acute Beds	562,000	562,000	562,000
51418	SUNSHINE COAST - 5 PG ET Beds	0	0	0
51419	TOOWOOMBA - 8 Bed C&Youth Unit & Day Centre	10,471,902	0	10,471,902
51420	TOWNSVILLE - Redevelop 8 E/Treatment Beds Kirwan	571,454	0	571,454
51421	TOWNSVILLE - Redevelop 30 Bed	16,653,236	6,998,346	16,653,236
51422	TOWNSVILLE - New 6 Bed C&Y Unit & Day Centre	12,564,066	46,630	12,564,066
51423	WEST MORETON - New 18 Bed CCU	862,887	0	862,887
67499	WEST MORETON - New 18 Bed CCU - Gables	9,015,534	4,511,151	9,015,534
51424	WEST MORETON - New 9 Bed HS incorp. 5 Bed HDU	8,225,772	0	8,225,772
51425	WEST MORETON - Upgrade CCU to 20 Bed Forensic	1,952,005	0	1,952,005
51426	WEST MORETON - New 15 Bed Adol ETU DayC & School	15,691,443	11,479,160	15,691,443
50291	QH - MHCWP Program Planning & Contingency	151,050	-55,400	151,050
		146,351,050	23,541,887	146,351,050
	Yearly Totals		23,541,887	146,351,050
	Cumulative Totals		146,351,050	
	Deduct Land 51426 for 50291 balance	2,000,000		

PN	PROJECT TITLE - MHCWP	F'CAST BUDGET	ATD		ATD		ATD		ATD		ATD	
		AS @ 17-Feb-12	TOTAL 2007-2008	TOTAL 2008-2009	TOTAL 2009-2010	TOTAL 2010-2011	July 2011 JUL FY12	Aug 2011 AUG FY12	Sept 2011 SEP FY12	Oct 2011 OCT FY12		
51410	BAYSIDE - New 20 Bed CCU	9,455,868	0	63,768	1,777,221	458,795	4,138	4,653	24,471	4,024		
51411	LOGAN - New 25 Acute Care Beds	15,527,817	1,000	211,338	1,358,765	3,150,164	10,045	312,989	508,882	599,008		
51412	LOGAN - New 16 Bed CCU	8,628,391	14,750	136,134	801,730	89,390	5,931	1,000	0	0		
51413	MACKAY - New 24 Bed Acute Care Unit	2,550,000	44,584	2,559	0	296,053	0	0	0	0		
51414	PAH/MATER - New 20 Bed CCU	10,459,971	3,683,432	626,546	692,796	4,484,544	92,705	31,331	398,888	81,842		
51415	REDCLIFFE/CABOOLTURE - New 20	10,980,891	0	543,661	410,856	3,537,898	25,159	781,150	879,454	670,347		
51416	REDCLIFFE/CABOOLTURE - New 23	12,026,763	0	561,838	387,399	3,623,656	25,331	815,411	871,689	683,024		
51417	ROCKHAMPTON - 4 Psycho-geriatric Acute Beds	562,000	0	0	0	0	0	0	0	0		
51418	SUNSHINE COAST - 5 PG ET Beds	0	0	0	0	0	0	0	0	0		
51419	TOOWOOMBA - 8 Bed C&Youth Unit & Day Centre	10,471,902	0	69,790	734,933	4,781,366	31,822	987,027	1,355,892	1,278,482		
51420	TOWNSVILLE - Redevelop 8 E/Treatment Beds Kirwan	571,454	571,454	1,000	0	0	0	0	0	0		
51421	TOWNSVILLE - Redevelop 30 Bed	16,653,236	0	425,399	14,781	74,508	16,000	23,061	10,308	14,331		
51422	TOWNSVILLE - New 6 Bed C&Y Unit & Day Centre	12,564,066	0	155,739	221,117	877,027	10,001	11,793	3,498	5,400		
51423	WEST MORETON - New 18 Bed CCU	862,887	28,832	382,981	447,074	4,000	0	0	0	0		
67499	WEST MORETON - New 18 Bed CCU - Gailles	9,015,534				857,573	11,840	12,488	6,899	2,000		
51424	WEST MORETON - New 9 Bed HS incorp. 5 Bed HDU	8,225,772	96,488	656,236	1,558,502	5,480,046	46,890	87,947	15,365	90,560		
51425	WEST MORETON - Upgrade CCU to 20 Bed Forensic	1,952,005	2,000	14,400	18,600	161,103	3,970	4,049	0	3,220		
51426	WEST MORETON - New 15 Bed Adol ETU DayC & School	15,691,443	16,500	8,000	101,118	304,201	8,974	8,823	3,627	1,572		
50291	QH - MHCWP Program Planning & Contingency	151,050	50,059	23,936	24,053	22,074	0	6,106	14,771	19,313		
		146,351,050	4,509,099	3,883,325	8,548,944	28,202,398	292,807	3,087,829	4,093,744	3,453,124		
	Yearly Totals		4,509,099	3,883,325	8,548,944	28,202,398	292,807	3,087,829	4,093,744	3,453,124		
	Cumulative Totals			8,392,424	16,941,368	45,143,766	45,436,573	48,524,402	52,618,145	56,071,269		
	Deduct Land 51426 for 50291 balance	2,000,000										

PN	PROJECT TITLE - MHCWP	F'CAST BUDGET	ATD	ATD	ATD	F'CAST	F'CAST	F'CAST	F'CAST	F'CAST	F'CAST
		AS @	Nov 2011	Dec 2011	Jan 2012	Feb 2012	Mar 2012	Apr 2012	May 2012	June 2012	TOTAL 2011-2012
		17-Feb-12	NOV FY12	DEC FY12	JAN FY12	FEB FY12	MAR FY12	APR FY12	MAY FY12	JUN FY12	
51410	BAYSIDE - New 20 Bed CCU	9,455,868	1,023	113,034	235,703	250,000	300,000	350,000	400,000	400,000	2,087,046
51411	LOGAN - New 25 Acute Care Beds	15,527,817	576,588	1,119,734	677,424	700,000	800,000	800,000	900,000	900,000	7,904,670
51412	LOGAN - New 16 Bed CCU	8,628,391	161,718	0	31,726	10,000	50,000	50,000	115,000	250,000	675,375
51413	MACKAY - New 24 Bed Acute Care Unit	2,550,000	0	2,200,000	0	0	0	0	0	2,857	2,202,857
51414	PAH/MATER - New 20 Bed CCU	10,459,971	12,193	17,839	1,484	0	200,000	0	0	136,372	972,654
51415	REDCLIFFE/CABOOLTURE - New 20	10,980,891	692,433	594,395	280,176	500,000	600,000	600,000	600,000	25,000	6,248,116
51416	REDCLIFFE/CABOOLTURE - New 23	12,026,763	680,228	603,415	281,636	500,000	505,000	650,000	750,000	500,000	6,865,735
51417	ROCKHAMPTON - 4 Psycho-geriatric Acute Beds	562,000	0	0	0	0	0	0	0	0	0
51418	SUNSHINE COAST - 5 PG ET Beds	0	0	0	0	0	0	0	0	0	0
51419	TOOWOOMBA - 8 Bed C&Youth Unit & Day Centre	10,471,902	522,816	110,728	58,452	0	50,000	0	0	400,000	4,795,220
51420	TOWNSVILLE - Redevelop 8 E/Treatment Beds Kirwan	571,454	0	0	0	0	0	0	0	0	0
51421	TOWNSVILLE - Redevelop 30 Bed	16,653,236	12,026	59,475	58,707	25,000	10,000	10,000	10,000	50,000	298,910
51422	TOWNSVILLE - New 6 Bed C&Y Unit & Day Centre	12,564,066	0	2,859	0	20,000	50,000	75,000	150,000	500,000	828,551
51423	WEST MORETON - New 18 Bed CCU	862,887	0	0	0	0	0	0	0	0	0
67499	WEST MORETON - New 18 Bed CCU - Gales	9,015,534	12,414	1,169	0	10,000	40,000	40,000	50,000	50,000	236,810
51424	WEST MORETON - New 9 Bed HS incorp. 5 Bed HDU	8,225,772	5,218	19,985	3,713	0	0	0	0	75,000	344,678
51425	WEST MORETON - Upgrade CCU to 20 Bed Forensic	1,952,005	34,034	500	9,033	25,000	150,000	300,000	450,000	475,000	1,454,806
51426	WEST MORETON - New 15 Bed Adol ETU DayC & School	15,691,443	5,640	14,725	4,103	10,000	10,000	40,000	10,000	10,000	127,464
50291	QH - MHCWP Program Planning & Contingency	151,050	12,999	30,104	3,034	0	0	0	0	0	86,327
		146,351,050	2,729,331	4,887,964	1,645,192	2,050,000	2,765,000	2,915,000	3,435,000	3,774,229	35,129,218
	Yearly Totals		2,729,331	4,887,964	1,645,192	2,050,000	2,765,000	2,915,000	3,435,000	3,774,229	35,129,218
	Cumulative Totals		58,800,599	63,688,563	65,333,755						80,272,984
	Deduct Land 51426 for 50291 balance	2,000,000									

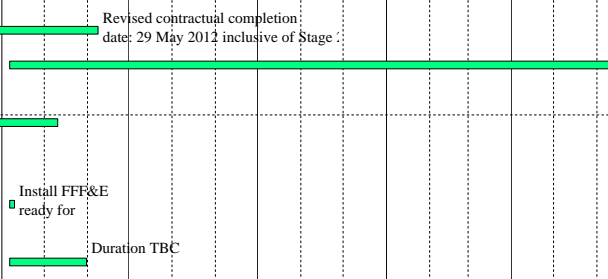
PN	PROJECT TITLE - MHCWP	F'CAST BUDGET	F'CAST	F'CAST	CHECK
		AS @	TOTAL 2012-2013	TOTAL 2013-2014	
		17-Feb-12			
51410	BAYSIDE - New 20 Bed CCU	9,455,868	5,069,038	0	9,455,868
51411	LOGAN - New 25 Acute Care Beds	15,527,817	2,901,881	0	15,527,817
51412	LOGAN - New 16 Bed CCU	8,628,391	6,911,012	0	8,628,391
51413	MACKAY - New 24 Bed Acute Care Unit	2,550,000	3,947	0	2,550,000
51414	PAH/MATER - New 20 Bed CCU	10,459,971	0	0	10,459,971
51415	REDCLIFFE/CABOOLTURE - New 20	10,980,891	240,360	0	10,980,891
51416	REDCLIFFE/CABOOLTURE - New 23	12,026,763	588,135	0	12,026,763
51417	ROCKHAMPTON - 4 Psycho-geriatric Acute Beds	562,000	0	562,000	562,000
51418	SUNSHINE COAST - 5 PG ET Beds	0	0	0	0
51419	TOOWOOMBA - 8 Bed C&Youth Unit & Day Centre	10,471,902	90,593	0	10,471,902
51420	TOWNSVILLE - Redevelop 8 E/Treatment Beds Kirwan	571,454	-1,000	0	571,454
51421	TOWNSVILLE - Redevelop 30 Bed	16,653,236	8,841,293	6,998,346	16,653,236
51422	TOWNSVILLE - New 6 Bed C&Y Unit & Day Centre	12,564,066	10,435,001	46,630	12,564,066
51423	WEST MORETON - New 18 Bed CCU	862,887	0	0	862,887
67499	WEST MORETON - New 18 Bed CCU - Gales	9,015,534	3,410,000	4,511,151	9,015,534
51424	WEST MORETON - New 9 Bed HS incorp. 5 Bed HDU	8,225,772	89,823	0	8,225,772
51425	WEST MORETON - Upgrade CCU to 20 Bed Forensic	1,952,005	301,096	0	1,952,005
51426	WEST MORETON - New 15 Bed Adol ETU DayC & School	15,691,443	3,655,000	11,479,160	15,691,443
50291	QH - MHCWP Program Planning & Contingency	151,050	0	-55,400	151,050
		146,351,050	42,536,179	23,541,887	146,351,050
	Yearly Totals		42,536,179	23,541,887	146,351,050
	Cumulative Totals		122,809,163	146,351,050	
	Deduct Land 51426 for 50291 balance	2,000,000			

7 MHCWP Master Programme

Activity ID	Activity Name	Start	Finish	Original	Remaining Duration	% Complete	2012												2013								
							Nov	Dec	Jan	Feb	Mar	Apr	May	Jun	Jul	Aug	Sep	Oct	Nov	Dec	Jan	Feb	Mar	Apr	May	Jun	Jul
BAYSIDE - New 20 Bed CCU																											
CV 10	Service Planning (SP)/Master Planning (MP)	27-Sep-07 A	03-Jul-08 A	55	0	100%																					
CV 20	Land Acquisition (LA)	01-Oct-07 A	09-Oct-09 A	120	0	100%																					
CV 30	Town Planning/Rezoning (TP)	19-Oct-09 A	18-Aug-10 A	80	0	100%																					
CV 40	Pre-Design Incl. PDP (PD)	08-Sep-08 A	21-May-10 A	40	0	100%																					
CV 50	PDP Approval	24-May-10 A	11-Jun-10 A	15	0	100%																					
CV 60	Schematic Design (SD)	08-Sep-08 A	21-May-10 A	40	0	100%																					
CV 70	Schematic Design Approval	24-May-10 A	11-Jun-10 A	15	0	100%																					
CV 80	Design Development (DD)	22-Jun-10 A	29-Nov-10 A	40	0	100%																					
CV 90	Design Development Approval	29-Nov-10 A	24-Feb-11 A	15	0	100%																					
CV 100	Contract Documentation incl. Bills (CD)	20-Dec-10 A	22-Jul-11 A	70	0	100%																					
CV 110	Contract Documentation Approval	21-Jun-11 A	22-Jul-11 A	10	0	100%																					
CV 120	Tender (TE)	27-Jul-11 A	31-Aug-11 A	26	0	100%																					
CV 130	Tender Evaluation and Award	01-Sep-11 A	07-Nov-11 A	30	0	100%																					
CV 140	Construction (CN)	07-Nov-11 A	19-Oct-12	237	176	27%	Contractual Completion 19 Oct 2012 (EOT7).																				
CV 150	12 Months Defects Liability Period	22-Oct-12	21-Oct-13	251	251	0%																					
CV 160	FF&E and IT Place Orders	30-Jul-12	19-Oct-12	60	60	0%																					
CV 170	FF&E & IT Delivery	22-Oct-12	02-Nov-12	10	10	0%																					
CV 180	QH Commissioning	22-Oct-12	14-Dec-12	40	40	0%																					



Activity ID	Activity Name	Start	Finish	Original	Remaining Duration	% Complete	2012												2013					
							Nov	Dec	Jan	Feb	Mar	Apr	May	Jun	Jul	Aug	Sep	Oct	Nov	Dec	Jan	Feb	Mar	Apr
LOGAN - New 25 Acute Care Beds																								
CT 10	Service Plan/Master Plan (SP/MP) - Confirm MOSD	01-Aug-07 A	01-Jul-09 A	166	0	100%																		
CT 20	Engage Principal Consultant & Brief	29-Aug-08 A	04-Nov-08 A	2	0	100%																		
CT 30	Site Option Study - Greenfield Site (SOS)	04-Nov-08 A	06-Feb-09 A	50	0	100%																		
CT 40	Pre-Design Incl. PDP (PD)	09-Feb-09 A	22-Jul-09 A	80	0	100%																		
CT 50	PDP/SD Approval	23-Jul-09 A	27-Jul-09 A	10	0	100%																		
CT 60	Schematic Design (SD)	10-Apr-09 A	22-Jul-09 A	35	0	100%																		
CT 70	Hospital Campus Designation/Material CofUse	07-Sep-09 A	26-Feb-10 A	120	0	100%																		
CT 80	Design Development (DD)	27-Jul-09 A	23-Oct-09 A	40	0	100%																		
CT 90	Design Development Approval	26-Oct-09 A	16-Dec-09 A	10	0	100%																		
CT 100	Contract Documentation incl. Bills (CD)	26-Oct-09 A	08-Jun-10 A	81	0	100%																		
CT 110	Contract Documentation Approval	22-Apr-10 A	08-Jun-10 A	15	0	100%																		
CT 120	Tender (TE)	09-Jun-10 A	16-Jul-10 A	25	0	100%																		
CT 130	Tender Evaluation and Award	19-Jul-10 A	20-Sep-10 A	30	0	100%																		
CT 140	Construction (CN) Stage 1 & Stage 2	20-Sep-10 A	08-Jun-12	300	81	100%																		
CT 150	12 Months Defects Liability Period - Stage 1 & Stage 2	06-Apr-12	10-Jun-13	297	297	0%																		
CT 160	FF&E and IT Place Orders	17-Feb-12	10-May-12	60	60	0%																		
CT 170	FF&E & IT Delivery	06-Apr-12	09-Apr-12	2	2	0%																		
CT 180	QH Commissioning	06-Apr-12	31-May-12	40	40	0%																		



Activity ID	Activity Name	Start	Finish	Original	Remaining Duration	% Complete	2012												2013					
							Nov	Dec	Jan	Feb	Mar	Apr	May	Jun	Jul	Aug	Sep	Oct	Nov	Dec	Jan	Feb	Mar	Apr
REDCLIFFE/CABOOLTURE - New 20 Bed Acute Care																								
MB 10	Service Plan/Master Plan (SP/MP)	01-Oct-07 A	08-May-09 A	120	0	100%																		
MB 20	Prepare TOR for Principal Consultant	28-Jul-08 A	07-Aug-08 A	7	0	100%																		
MB 30	Principal Consultant Tender, Evaluate & Award	07-Aug-08 A	05-Sep-08 A	10	0	100%																		
MB 40	Pre-Design Incl. PDP (PD)	17-Sep-08 A	12-Mar-09 A	80	0	100%																		
MB 50	PDP Approval	16-Mar-09 A	08-May-09 A	5	0	100%																		
MB 60	Schematic Design (SD)	17-Sep-08 A	12-Mar-09 A	80	0	100%																		
MB 70	Schematic Design Approval	16-Mar-09 A	08-May-09 A	5	0	100%																		
MB 80	Design Development (DD)	03-Mar-09 A	26-May-09 A	40	0	100%																		
MB 90	Design Development Approval	26-May-09 A	01-Jun-09 A	15	0	100%																		
MB 100	Contract Documentation incl. Bills (CD)	26-May-09 A	12-Mar-10 A	55	0	100%																		
MB 110	Contract Documentation Approval	15-Mar-10 A	13-Apr-10 A	12	0	100%																		
MB 120	Tender (TE)	16-Apr-10 A	02-Jun-10 A	30	0	100%																		
MB 130	Tender Evaluation and Award	03-Jun-10 A	01-Sep-10 A	30	0	100%																		
MB 140	Construction (CN)	01-Sep-10 A	18-May-12	260	66	100%																		
MB 150	12 Months Defects Liability Period	21-May-12	20-May-13	251	251	0%																		
MB 160	FF&E and IT Place Orders	21-Nov-11 A	18-May-12	60	46	90%																		
MB 170	FF&E & IT Delivery	21-May-12	01-Jun-12	10	10	0%																		
MB 180	QH Commissioning	21-May-12	30-Jul-12	51	51	0%																		

Contractual completion Date = 21 Feb 2012 (EOT 40)

Accept 1st patients TBC



MASTER PROGRAMME

■ Actual Work ■ Critical Re...
■ Remaining Work ◆ Milestone



Activity ID	Activity Name	Start	Finish	Original	Remaining Duration	% Complete	2012												2013						
							Nov	Dec	Jan	Feb	Mar	Apr	May	Jun	Jul	Aug	Sep	Oct	Nov	Dec	Jan	Feb	Mar	Apr	May
REDCLIFFE/CABOOLTURE - New 23 Bed Medium Secure																									
MS 10	Service/Master Plan (SP/MP)	01-Oct-07 A	08-May-09 A	120	0	100%																			
MS 20	Prepare TOR for Principal Consultant	28-Jul-08 A	07-Aug-08 A	7	0	100%																			
MS 30	Principal Consultant Tender, Evaluate & Award	07-Aug-08 A	05-Sep-08 A	10	0	100%																			
MS 40	Pre-Design Incl. PDP (PD)	17-Sep-08 A	12-Mar-09 A	80	0	100%																			
MS 50	PDP Approval	16-Mar-09 A	08-May-09 A	15	0	100%																			
MS 60	Schematic Design (SD)	17-Sep-08 A	12-Mar-09 A	80	0	100%																			
MS 70	Schematic Design Approval	16-Mar-09 A	08-May-09 A	15	0	100%																			
MS 80	Design Development (DD)	03-Mar-09 A	26-May-09 A	40	0	100%																			
MS 90	Design Development Approval	26-May-09 A	01-Jun-09 A	15	0	100%																			
MS 100	Contract Documentation incl. Bills (CD)	26-May-09 A	12-Mar-10 A	55	0	100%																			
MS 110	Contract Documentation Approval	15-Mar-10 A	13-Apr-10 A	12	0	100%																			
MS 120	Tender (TE)	16-Apr-10 A	02-Jun-10 A	30	0	100%																			
MS 130	Tender Evaluation and Award	03-Jun-10 A	01-Sep-10 A	30	0	100%																			
MS 140	Construction (CN)	01-Sep-10 A	18-May-12	260	66	100%																			
MS 150	12 Months Defects Liability Period	21-May-12	20-May-13	251	251	0%																			
MS 160	FF&E and IT Place Orders	21-Nov-11 A	18-May-12	60	46	66.67%																			
MS 170	FF&E & IT Delivery	21-May-12	01-Jun-12	10	10	0%																			
MS 180	QH Commissioning	21-May-12	30-Jul-12	51	51	0%																			

Contractual completion Date = 21 Feb 2012 (EDT 40)

Accept 1st patients TBC



MASTER PROGRAMME

█ Actual Work	█ Critical Re...	◆ Milestone
█ Remaining Work		

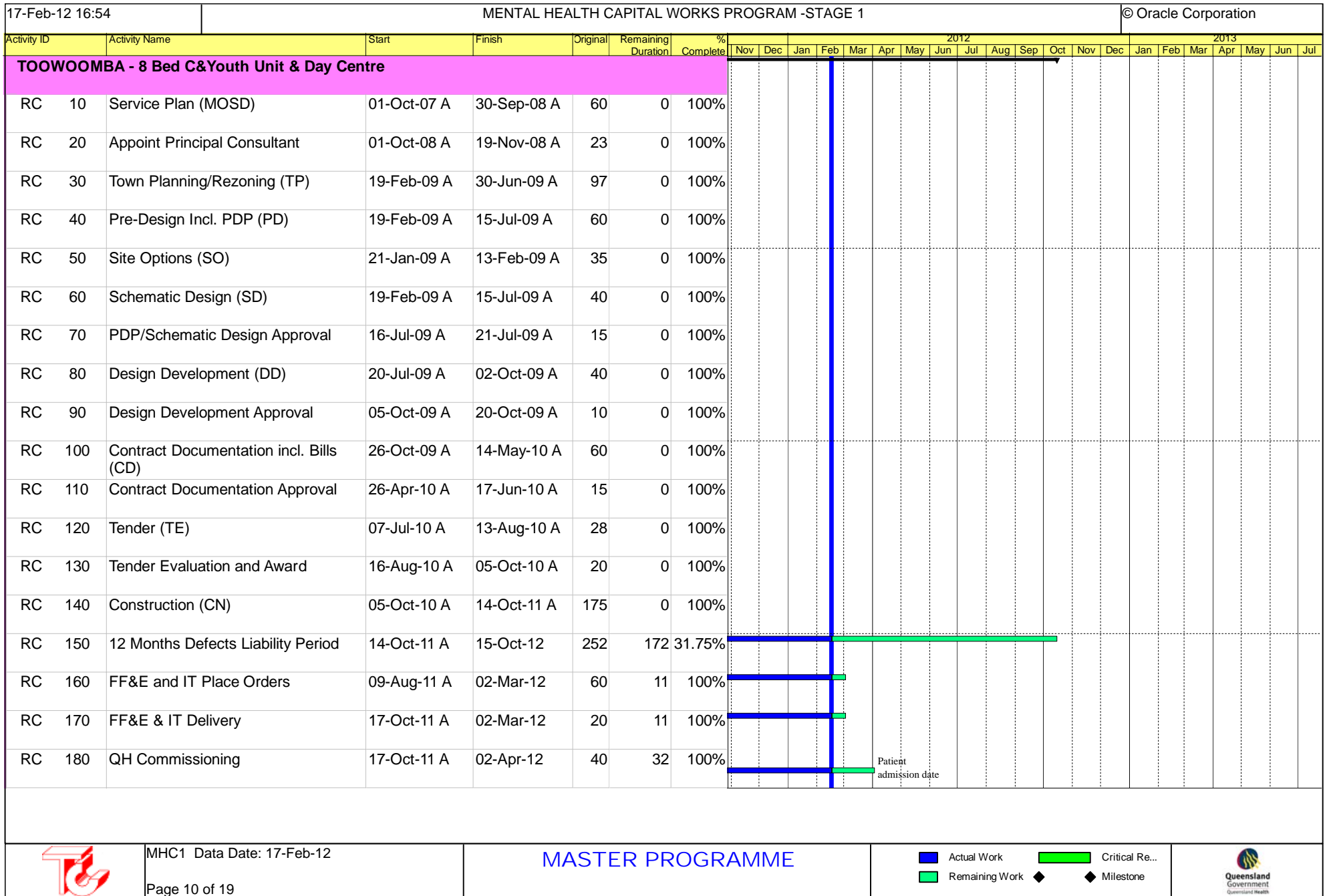


Activity ID	Activity Name	Start	Finish	Original	Remaining Duration	% Complete	2012												2013																								
							Nov	Dec	Jan	Feb	Mar	Apr	May	Jun	Jul	Aug	Sep	Oct	Nov	Dec	Jan	Feb	Mar	Apr	May	Jun	Jul																
	ROCKHAMPTON - 4 Psycho-geriatric Acute Beds																																										

--	--	--	--	--	--	--	--	--	--	--	--	--	--	--	--	--	--	--	--	--	--	--	--	--	--	--	--

Activity ID	Activity Name	Start	Finish	Original	Remaining Duration	% Complete	2012												2013					
							Nov	Dec	Jan	Feb	Mar	Apr	May	Jun	Jul	Aug	Sep	Oct	Nov	Dec	Jan	Feb	Mar	Apr
SUNSHINE COAST - 5 PG ET Beds in Nambour RACF																								
OK 10	Options Study (OS)	05-Oct-01 A	03-Dec-01 A	42	0	100%																		
OK 20	Land Acquisition (LA)	20-Jan-06 A	29-Jun-07 A	60	0	100%																		
OK 30	Town Planning/Rezoning (TP)	20-Jan-06 A	25-Jul-08 A	60	0	100%																		
OK 40	Pre-Design Incl. PDP (PD)	20-Jan-06 A	20-Jul-07 A	50	0	100%																		
OK 50	PDP Approval	20-Jul-07 A	31-Jul-07 A	10	0	100%																		
OK 60	Schematic Design (SD)	20-Jan-06 A	20-Jul-07 A	50	0	100%																		
OK 70	Schematic Design Approval	20-Jul-07 A	31-Jul-07 A	15	0	100%																		
OK 80	Design Development (DD)	23-Jul-07 A	17-Sep-07 A	40	0	100%																		
OK 90	Design Development Approval	21-Aug-07 A	17-Sep-07 A	3	0	100%																		
OK 100	Contract Documentation incl. Bills (CD)	18-Sep-07 A	14-Mar-08 A	60	0	100%																		
OK 110	Contract Documentation Approval	06-Oct-08 A	06-Oct-08 A	0	0	100%																		
OK 120	Tender (TE)	08-Oct-08 A	05-Nov-08 A	20	0	100%																		
OK 130	Tender Evaluation and Award	06-Nov-08 A	30-Jan-09 A	10	0	100%																		
OK 140	Construction (CN)	02-Feb-09 A	08-Dec-09 A	253	0	100%																		
OK 150	12 Months Defects Liability Period	09-Dec-09 A	05-Aug-11 A	252	0	100%																		
OK 160	FF&E and IT Place Orders	05-Oct-09 A	27-Nov-09 A	78	0	100%																		
OK 170	FF&E & IT Delivery	08-Dec-09 A	26-Feb-10 A	21	0	100%																		
OK 180	QH Commissioning	12-Oct-09 A	27-Apr-10 A	46	0	100%																		





Activity ID	Activity Name	Start	Finish	Original	Remaining Duration	% Complete	2012												2013						
							Nov	Dec	Jan	Feb	Mar	Apr	May	Jun	Jul	Aug	Sep	Oct	Nov	Dec	Jan	Feb	Mar	Apr	May
TOWNSVILLE - Redevelop 8 E/Treatment Beds Kirwan																									
RE 10	Service Plan/Master Plan (SP/MP)	01-Oct-07 A	01-Oct-07 A	0	0	100%																			
RE 20	Land Acquisition (LA)	01-Oct-07 A	02-Oct-07 A	0	0	100%																			
RE 30	Town Planning/Rezoning (TP)	01-Oct-07 A	02-Oct-07 A	0	0	100%																			
RE 40	Pre-Design Incl. PDP (PD)	01-Oct-07 A	02-Oct-07 A	0	0	100%																			
RE 50	PDP Approval	01-Oct-07 A	02-Oct-07 A	0	0	100%																			
RE 60	Schematic Design (SD)	01-Oct-07 A	02-Oct-07 A	0	0	100%																			
RE 70	Schematic Design Approval	01-Oct-07 A	02-Oct-07 A	0	0	100%																			
RE 80	Design Development (DD)	01-Oct-07 A	02-Oct-07 A	0	0	100%																			
RE 90	Design Development Approval	01-Oct-07 A	02-Oct-07 A	0	0	100%																			
RE 100	Contract Documentation incl. Bills (CD)	01-Oct-07 A	02-Oct-07 A	0	0	100%																			
RE 110	Contract Documentation Approval	01-Oct-07 A	02-Oct-07 A	0	0	100%																			
RE 120	Tender (TE)	01-Oct-07 A	02-Oct-07 A	0	0	100%																			
RE 130	Tender Evaluation and Award	01-Oct-07 A	02-Oct-07 A	0	0	100%																			
RE 140	Construction (CN)	01-Oct-07 A	30-Jun-08 A	25	0	100%																			
RE 150	12 Months Defects Liability Period	01-Oct-07 A	02-Oct-07 A	0	0	100%																			
RE 160	FF&E and IT Place Orders	01-Oct-07 A	02-Oct-07 A	0	0	100%																			
RE 170	FF&E & IT Delivery	01-Oct-07 A	02-Oct-07 A	0	0	100%																			
RE 180	Commissioning (PC)	12-May-08 A	30-Jul-08 A	15	0	100%																			

	MHC1 Data Date: 17-Feb-12	<h2 style="color: blue;">MASTER PROGRAMME</h2>	<div style="display: flex; justify-content: space-around;"> <div style="text-align: left;"> <div style="background-color: blue; width: 10px; height: 10px; display: inline-block;"></div> Actual Work</div> <div style="text-align: left;"> <div style="background-color: lightgreen; width: 10px; height: 10px; display: inline-block;"></div> Remaining Work </div> </div> <div style="text-align: left;"> <div style="background-color: green; width: 10px; height: 10px; display: inline-block;"></div> Critical Re... </div> <div style="text-align: left;"> <div style="display: inline-block; width: 0; height: 0; border-left: 5px solid transparent; border-right: 5px solid transparent; border-bottom: 8px solid black;"></div> Milestone </div>
--	---------------------------	--	---

17-Feb-12 16:54		MENTAL HEALTH CAPITAL WORKS PROGRAM -STAGE 1						© Oracle Corporation																			
Activity ID	Activity Name	Start	Finish	Original	Remaining Duration	% Complete	2012												2013								
							Nov	Dec	Jan	Feb	Mar	Apr	May	Jun	Jul	Aug	Sep	Oct	Nov	Dec	Jan	Feb	Mar	Apr	May	Jun	Jul
TOWNSVILLE - Redevelop 30 Bed Secure Unit TTH																											
RM 10	Service Model (SM)	01-Aug-07 A	28-Nov-08 A	124	0	100%																					
RM 20	Site Option Study (OS)	22-May-08 A	30-Oct-08 A	30	0	100%																					
RM 30	Principal Consultants Tender, Evaluate & Award	25-Mar-08 A	15-May-08 A	20	0	100%																					
RM 40	Pre-Design Incl. PDP (PD)	30-Oct-08 A	05-Jun-09 A	60	0	100%																					
RM 50	PDP Approval	08-Jun-09 A	22-Sep-10 A	15	0	100%																					
RM 60	Schematic Design (SD)	03-Dec-08 A	05-Jun-09 A	18	0	100%																					
RM 70	Schematic Design Approval	08-Jun-09 A	22-Sep-10 A	15	0	100%																					
RM 80	Design Development (DD) Incl. Revised (SD) Stage	22-Mar-10 A	25-Nov-11 A	40	0	100%																					
RM 90	Design Development Approval Incl. Budget Savings	28-Nov-11 A	23-Feb-12	15	5	100%																					
RM 100	Contract Documentation incl. Bills (CD)	24-Feb-12	31-May-12	70	70	0%																					
RM 110	Contract Doc. Review & Approval	01-Jun-12	21-Jun-12	15	15	0%																					
RM 120	Tender (TE)	22-Jun-12	12-Jul-12	15	15	0%																					
RM 130	Tender Evaluation and Award	13-Jul-12	02-Aug-12	15	15	0%																					
RM 140	Construction (CN)	03-Aug-12	30-Jan-14	370	370	0%																					
RM 150	12 Months Defects Liability Period	31-Jan-14	29-Jan-15	251	251	0%																					
RM 160	FF&E and IT Place Orders	03-Aug-12	25-Oct-12	60	60	0%	progressive with staging, TBA further																				
RM 170	FF&E & IT Delivery	26-Apr-13	09-May-13	10	10	0%	progressive with																				
RM 180	QH Commissioning	26-Apr-13	20-Jun-13	40	40	0%	progres																				



MASTER PROGRAMME

█ Actual Work █ Critical Re...
█ Remaining Work ◆ Milestone



Activity ID	Activity Name	Start	Finish	Original	Remaining Duration	% Complete	2012												2013						
							Nov	Dec	Jan	Feb	Mar	Apr	May	Jun	Jul	Aug	Sep	Oct	Nov	Dec	Jan	Feb	Mar	Apr	May
TOWNSVILLE - New 6 Bed C&Y Unit & Day Centre																									
SG 10	Service Plan (SP)	01-Jul-08 A	22-Jul-09 A	46	0	100%																			
SG 20	Confirm Brief & Site Option & Approve	29-Jan-09 A	29-Jan-09 A	20	0	100%																			
SG 30	Town Planning/Rezoning (TP)	17-Feb-12	17-Feb-12	0	0	0%																			
SG 40	Pre-Design Incl. PDP (PD)	29-Jan-09 A	22-Jul-09 A	20	0	100%																			
SG 50	PDP Approval	23-Jul-09 A	30-Mar-10 A	10	0	100%																			
SG 60	Schematic Design (SD)	29-Jan-09 A	22-Jul-09 A	20	0	100%																			
SG 70	Schematic Design Approval	23-Jul-09 A	30-Mar-10 A	10	0	100%																			
SG 80	Schematic/Design Development (SD)/(DD)	09-Jan-09 A	26-Nov-10 A	60	0	100%																			
SG 90	Design Development Approval	26-Oct-10 A	04-Jan-11 A	10	0	100%																			
SG 100	Contract Documentation incl. Bills (CD)	29-Nov-10 A	10-Jun-11 A	75	0	100%																			
SG 110	Contract Documentation Approval	10-May-11 A	07-Jun-11 A	12	0	100%																			
SG 120	Tender (TE)	15-Jun-11 A	26-Jul-11 A	30	0	100%																			
SG 130	Tender Evaluation and Award	27-Jul-11 A	01-Feb-12 A	31	0	100%	█	█	█	█	█														
SG 140	Construction (CN)	01-Feb-12 A	13-Dec-12	225	215	0%																			
SG 150	12 Months Defects Liability Period	14-Dec-12	13-Dec-13	251	251	0%																			
SG 160	FF&E and IT Place Orders	21-Sep-12	13-Dec-12	60	60	0%																			
SG 170	FF&E & IT Delivery	14-Dec-12	10-Jan-13	10	10	0%																			
SG 180	QH Commissioning	14-Dec-12	21-Feb-13	40	40	0%																			



MASTER PROGRAMME

█ Actual Work █ Critical Re...
█ Remaining Work ◆ Milestone



Activity ID	Activity Name	Start	Finish	Original	Remaining Duration	% Complete	2012												2013					
							Nov	Dec	Jan	Feb	Mar	Apr	May	Jun	Jul	Aug	Sep	Oct	Nov	Dec	Jan	Feb	Mar	Apr
WEST MORETON - New 18 Bed CCU																								
TV 10	Service Plan/Consultation Process	05-Jul-07 A	11-Feb-11 A	131	0	100%																		
TV 20	Land Acquisition (LA)	05-Jul-07 A	05-Aug-08 A	131	0	100%																		
TV 30	Town Planning/Rezoning (TP)	27-Sep-07 A	11-Feb-11 A	80	0	100%																		
TV 40	Pre-Design Incl. PDP (PD)	27-Sep-07 A	21-Nov-08 A	80	0	100%																		
TV 50	PDP Approval	24-Nov-08 A	12-Dec-08 A	15	0	100%																		
TV 60	Schematic Design (SD)	27-Sep-07 A	21-Nov-08 A	25	0	100%																		
TV 70	Schematic Design Approval	24-Nov-08 A	12-Dec-08 A	15	0	100%																		
TV 80	Design Development (DD)	12-Jan-09 A	01-May-09 A	40	0	100%																		
TV 90	Design Development Approval	04-May-09 A	18-May-09 A	15	0	100%																		
TV 100	Contract Documentation incl. Bills (CD) - Project aborted on this Site 11	06-Apr-09 A	11-Feb-11 A	70	0	100%																		
TV 110	Contract Documentation Approval	11-Feb-11 A	11-Feb-11 A	0	0	100%																		
TV 120	Tender (TE)	11-Feb-11 A	11-Feb-11 A	0	0	100%																		
TV 130	Tender Evaluation and Award	11-Feb-11 A	11-Feb-11 A	0	0	100%																		
TV 140	Construction (CN)	11-Feb-11 A	11-Feb-11 A	0	0	100%																		
TV 150	12 Months Defects Liability Period	11-Feb-11 A	11-Feb-11 A	0	0	100%																		
TV 160	FF&E and IT Place Orders	11-Feb-11 A	11-Feb-11 A	0	0	100%																		
TV 170	FF&E & IT Delivery	11-Feb-11 A	11-Feb-11 A	0	0	100%																		
TV 180	QH Commissioning	11-Feb-11 A	11-Feb-11 A	0	0	100%																		



MHC1 Data Date: 17-Feb-12

Page 14 of 19

MASTER PROGRAMME

- Actual Work
- Remaining Work
- Critical Re...
- Milestone



Activity ID	Activity Name	Start	Finish	Original	Remaining Duration	% Complete	2012												2013												
							Nov	Dec	Jan	Feb	Mar	Apr	May	Jun	Jul	Aug	Sep	Oct	Nov	Dec	Jan	Feb	Mar	Apr	May	Jun	Jul				
WEST MORETON - Gailes New 18 Bed CCU																															
WW 10	Service Plan/Consultation Process	05-Jul-07 A	30-Mar-12	131	31	100%																									
WW 20	Land Acquisition (LA)	10-May-10 A	05-Oct-10 A	131	0	100%																									
WW 30	Town Planning/Rezoning (TP) incl supporting design docs	03-Oct-11 A	11-May-12	86	61	100%																									
WW 40	Pre-Design Incl. PDP (PD)	18-Apr-11 A	22-Jun-12	51	21	100%																									
WW 50	PDP Approval	25-Jun-12	13-Jul-12	15	15	0%																									
WW 60	Schematic Design (SD)	18-Apr-11 A	22-Jun-12	51	21	100%																									
WW 70	Schematic Design Approval	25-Jun-12	13-Jul-12	15	15	0%																									
WW 80	Design Development (DD)	25-Jun-12	17-Aug-12	40	40	0%																									
WW 90	Design Development Approval	20-Aug-12	31-Aug-12	10	10	0%																									
WW 100	Contract Documentation incl. Bills (CD)	20-Aug-12	23-Nov-12	70	70	0%																									
WW 110	Contract Documentation Approval	26-Nov-12	07-Dec-12	10	10	0%																									
WW 120	Tender (TE)	26-Nov-12	21-Dec-12	20	20	0%																									
WW 130	Tender Evaluation and Award	07-Jan-13	01-Feb-13	20	20	0%																									
WW 140	Construction (CN)	04-Feb-13	13-Dec-13	225	225	0%																									
WW 150	12 Months Defects Liability Period	16-Dec-13	16-Dec-14	252	252	0%																									
WW 160	FF&E and IT Place Orders	04-Feb-13	26-Apr-13	60	60	0%																									
WW 170	FF&E & IT Delivery	16-Dec-13	10-Jan-14	10	10	0%																									
WW 180	Commissioning (PC)	16-Dec-13	21-Feb-14	40	40	0%																									

4wks remaining to complete design sufficient for lodging SPS9.5, then 12 wks for SPA 9.5; 16 wks for SPA 9.5 approval received.

Design component on hold until until SPA9.5 approval received.



Activity ID	Activity Name	Start	Finish	Original	Remaining Duration	Complete %	2012												2013						
							Nov	Dec	Jan	Feb	Mar	Apr	May	Jun	Jul	Aug	Sep	Oct	Nov	Dec	Jan	Feb	Mar	Apr	May
WEST MORETON - New 9 Bed HS incorp. 5 Bed HDU																									
WD 10	Model of Care/Service Plan/Master Plan (MC/SP/M)	07-Jan-08 A	23-Dec-08 A	40	0	100%																			
WD 20	Land Acquisition (LA)	07-Jan-08 A	17-Feb-12	0	0	100%																			
WD 30	Town Planning/Rezoning (TP)	17-Feb-12	17-Feb-12	0	0	0%																			
WD 40	Pre-Design Incl. PDP (PD)	22-Nov-07 A	08-Aug-08 A	80	0	100%																			
WD 50	PDP Approval	15-Aug-08 A	02-Sep-08 A	15	0	100%																			
WD 60	Schematic Design (SD)	22-Nov-07 A	08-Aug-08 A	80	0	100%																			
WD 70	Schematic Design Approval	15-Aug-08 A	02-Sep-08 A	15	0	100%																			
WD 80	Design Development (DD)	15-Aug-08 A	28-Jan-09 A	40	0	100%																			
WD 90	Design Development Approval	28-Jan-09 A	18-May-09 A	10	0	100%																			
WD 100	Contract Documentation incl. Bills (CD)	29-Jan-09 A	14-Jul-09 A	105	0	100%																			
WD 110	Contract Documentation Approval	26-Jun-09 A	14-Jul-09 A	10	0	100%																			
WD 120	Tender (TE)	15-Jul-09 A	14-Aug-09 A	30	0	100%																			
WD 130	Tender Evaluation and Award	17-Aug-09 A	14-Jan-10 A	25	0	100%																			
WD 140	Construction (CN)	18-Jan-10 A	27-May-11 A	260	0	100%																			
WD 150	12 Months Defects Liability Period	27-May-11 A	25-May-12	250	71	65.6%																			
WD 160	FF&E and IT Place Orders	07-Oct-10 A	31-May-11 A	60	0	100%																			
WD 170	FF&E & IT Delivery	30-May-11 A	18-Nov-11 A	20	0	100%																			
WD 180	QH Commissioning	30-May-11 A	17-Feb-12	40	1	100%																			

Patients to be admitted 28



MASTER PROGRAMME

■ Actual Work ■ Critical Re...
■ Remaining Work ◆ Milestone



Activity ID	Activity Name	Start	Finish	Original	Remaining Duration	% Complete	2012												2013									
							Nov	Dec	Jan	Feb	Mar	Apr	May	Jun	Jul	Aug	Sep	Oct	Nov	Dec	Jan	Feb	Mar	Apr	May	Jun	Jul	
WEST MORETON - Upgrade DD to 20 Bed Forensic																												
WN 10	Service Model	07-Jan-08 A	07-Mar-12	60	14	100%	[Gantt bar: 07-Jan-08 to 07-Mar-12, 100% complete]																					
WN 20	Community Consultation	07-Jan-08 A	07-Mar-12	60	14	100%	[Gantt bar: 07-Jan-08 to 07-Mar-12, 100% complete]																					
WN 30	Free-Up Beds for Refurbishment	24-Oct-11 A	27-Feb-12	10	7	100%	[Gantt bar: 24-Oct-11 to 27-Feb-12, 100% complete]																					
WN 40	Pre-Design Incl. PDP (PD)	22-Nov-07 A	22-Nov-07 A	80	0	100%	[Gantt bar: 22-Nov-07 to 22-Nov-07, 100% complete]																					
WN 50	PDP Approval	15-Aug-08 A	02-Sep-08 A	10	0	100%	[Gantt bar: 15-Aug-08 to 02-Sep-08, 100% complete]																					
WN 60	Schematic Design (SD)	22-Nov-07 A	08-Aug-08 A	20	0	100%	[Gantt bar: 22-Nov-07 to 08-Aug-08, 100% complete]																					
WN 70	Schematic Design Approval	15-Aug-08 A	02-Sep-08 A	10	0	100%	[Gantt bar: 15-Aug-08 to 02-Sep-08, 100% complete]																					
WN 80	Design Development (DD)	09-Mar-09 A	31-Aug-10 A	60	0	100%	[Gantt bar: 09-Mar-09 to 31-Aug-10, 100% complete]																					
WN 90	Design Development Approval	01-Sep-10 A	24-Jan-11 A	15	0	100%	[Gantt bar: 01-Sep-10 to 24-Jan-11, 100% complete]																					
WN 100	Contract Documentation - Minor Works (CD)	15-Nov-10 A	08-Jul-11 A	60	0	100%	[Gantt bar: 15-Nov-10 to 08-Jul-11, 100% complete]																					
WN 110	Contract Documentation Approval	27-May-11 A	08-Jul-11 A	5	0	100%	[Gantt bar: 27-May-11 to 08-Jul-11, 100% complete]																					
WN 120	Tender (TE)	14-Jul-11 A	12-Aug-11 A	20	0	100%	[Gantt bar: 14-Jul-11 to 12-Aug-11, 100% complete]																					
WN 130	Tender Evaluation and Award	15-Aug-11 A	23-Jan-12 A	15	0	100%	[Gantt bar: 15-Aug-11 to 23-Jan-12, 100% complete]																					
WN 140	Construction (CN)	23-Jan-12 A	10-Jul-12	122	103	0%	[Gantt bar: 23-Jan-12 to 10-Jul-12, 0% complete]																					
WN 150	12 Months Defects Liability Period	11-Jul-12	09-Jul-13	250	250	0%	[Gantt bar: 11-Jul-12 to 09-Jul-13, 0% complete]																					
WN 160	FF&E and IT Place Orders	18-Apr-12	10-Jul-12	60	60	0%	[Gantt bar: 18-Apr-12 to 10-Jul-12, 0% complete]																					
WN 170	FF&E & IT Delivery	11-Jul-12	24-Jul-12	10	10	0%	[Gantt bar: 11-Jul-12 to 24-Jul-12, 0% complete]																					
WN 180	QH Commissioning	11-Jul-12	04-Sep-12	40	40	0%	[Gantt bar: 11-Jul-12 to 04-Sep-12, 0% complete]																					



MASTER PROGRAMME

■ Actual Work ■ Critical Re...
■ Remaining Work ◆ Milestone



Activity ID	Activity Name	Start	Finish	Original	Remaining Duration	% Complete	2012												2013						
							Nov	Dec	Jan	Feb	Mar	Apr	May	Jun	Jul	Aug	Sep	Oct	Nov	Dec	Jan	Feb	Mar	Apr	May
REDLAND - New 15 Bed Adol ETU DayC & School																									
YP 10	Site Options Study (OS) - Mini Master Plan	03-Sep-07 A	29-Jan-10 A	80	0	100%																			
YP 20	Land Acquisition (LA)	03-Sep-07 A	11-Mar-09 A	130	0	100%																			
YP 30	Town Planning/CID	26-Oct-09 A	24-Aug-12	130	136	100%																			
YP 40	Pre-Design Incl. PDP (PD)	12-Nov-09 A	13-May-11 A	80	0	100%																			
YP 50	PDP Approval	17-May-11 A	24-Aug-12	15	136	100%																			
YP 60	Schematic Design (SD)	12-Nov-09 A	13-May-11 A	80	0	100%																			
YP 70	Schematic Design Approval	17-May-11 A	24-Aug-12	15	136	100%																			
YP 80	Revised (SD) & (DD) Start Prior to CID outcome at QH Risk	27-Aug-12	21-Dec-12	85	85	0%																			
YP 90	Design Development Approval	07-Jan-13	25-Jan-13	15	15	0%																			
YP 100	Contract Documentation incl. Bills (CD)	07-Jan-13	29-Mar-13	60	60	0%																			
YP 110	Contract Documentation Approval	01-Apr-13	12-Apr-13	10	10	0%																			
YP 120	Tender (TE)	15-Apr-13	10-May-13	20	20	0%																			
YP 130	Tender Evaluation and Award	13-May-13	31-May-13	15	15	0%																			
YP 140	Construction (CN)	03-Jun-13	30-May-14	250	250	0%																			
YP 150	12 Months Defects Liability Period	02-Jun-14	29-May-15	251	251	0%																			
YP 160	FF&E and IT Place Orders	10-Mar-14	30-May-14	60	60	0%																			
YP 170	FF&E & IT Delivery	02-Jun-14	13-Jun-14	10	10	0%																			
YP 180	QH Commissioning	02-Jun-14	25-Jul-14	40	40	0%																			



MASTER PROGRAMME

■ Actual Work ■ Critical Re...
■ Remaining Work ◆ Milestone



Activity ID	Activity Name	Start	Finish	Original	Remaining	%	2012												2013					
							Duration	Complete	Nov	Dec	Jan	Feb	Mar	Apr	May	Jun	Jul	Aug	Sep	Oct	Nov	Dec	Jan	Feb
QH - MHCWP Program Planning & Project Reserve																								



MASTER PROGRAMME

■	Actual Work		Critical Re...
	Remaining Work	◆	◆ Milestone



8 Procurement and Risk Management

MHCWP - RISK MATRIX - PROJECTS

PN	PROJECT TITLE - MHCWP	KEY RISK								
		Scope Creep	Time	Cost/Financial	Quality	Human Resources	Communications	Procurement	Environmental	Political
51410	BAYSIDE - New 20 Bed CCU	Low	Moderate	Moderate	Low	Moderate	Moderate	Low	Moderate	Moderate
51411	LOGAN - Redevelop for 25 Acute Care Beds	Low	Moderate	Moderate	Low	Moderate	Moderate	Low	Low	Moderate
51412	LOGAN - New 16 Bed CCU	Low	High	Moderate	Low	Low	High	Low	Low	High
51413	MACKAY - New 24 Bed Acute Care Unit	N/A	N/A	N/A	N/A	N/A	N/A	N/A	N/A	N/A
51414	PAH/MATER - New 20 Bed CCU	project complete	project complete	project complete	project complete	project complete	project complete	project complete	project complete	project complete
51415	REDCLIFFE/CABOOLTURE - New 20	High - ECT added	Extreme	Extreme	Low	High	Moderate	Low	Low	Moderate
51416	REDCLIFFE/CABOOLTURE - New 23	High - ECT added	Extreme	Extreme	Low	High	Moderate	Low	Low	Moderate
51417	ROCKHAMPTON - 4 Psycho-geriatric Acute Beds	Low	Low	Low	Low	Low	Low	Low	Low	Low
51418	SUNSHINE COAST - 5 PG ET Beds	project complete	project complete	project complete	project complete	project complete	project complete	project complete	project complete	project complete
51419	TOOWOOMBA - 8 Bed C&Youth Unit & Day Centre	project complete	project complete	project complete	project complete	project complete	project complete	project complete	project complete	project complete
51420	TOWNSVILLE - Redevelop 8 E/Treatment Beds Kirwan	project complete	project complete	project complete	project complete	project complete	project complete	project complete	project complete	project complete
51421	TOWNSVILLE - Redevelop 30 Bed MSU	moderate	High	Moderate	Moderate	Low	Moderate	Moderate	Low	Moderate
51422	TOWNSVILLE - New 6 Bed C&Y Unit & Day Centre	Low	Moderate	Moderate	Low	High	Moderate	Low	Low	Low
51423	WEST MORETON - New 18 Bed CCU	Low	Moderate	Moderate	Low	Low	Moderate	Low	Low	Moderate
67499	WEST MORETON - New 18 Bed CCU - Gales	Low	High	Moderate	Low	Low	Moderate	Low	Low	Moderate
51424	WEST MORETON - New 9 Bed HS incorp. 5 Bed HDU	project complete	project complete	project complete	project complete	project complete	project complete	project complete	project complete	project complete
51425	WEST MORETON - Upgrade CCU to 20 Bed Forensic	Low	Low	Low	Low	High	Moderate	Low	Low	Moderate
51426	REDLAND - New 15 Bed Adol ETU DayC & School	Low	Moderate	Moderate	Low	Moderate	Moderate	Low	High	Moderate
50291	QH - MHCWP Program Planning & Contingency	N/A	N/A	Extreme	N/A	N/A	N/A	N/A	N/A	N/A